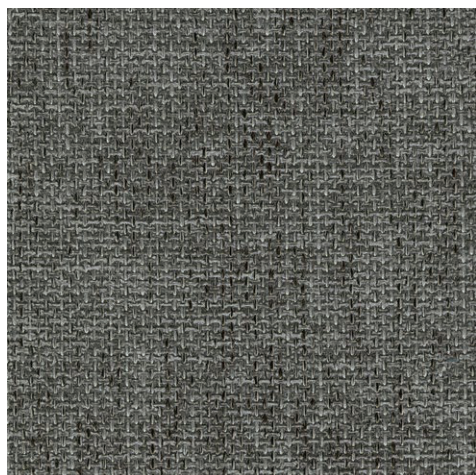
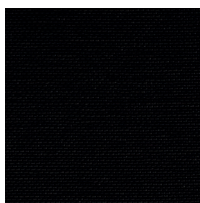


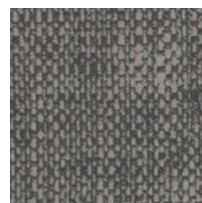
Die Farbwiedergabe ist nicht farbverbindlich.
 Des nuances de teintes dues à l'impression papier sont possibles.
 The colour reproduction may vary.



triest
4/2397 B1



bologna
2/0899 B1



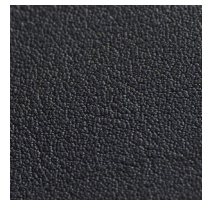
genua
4/4496



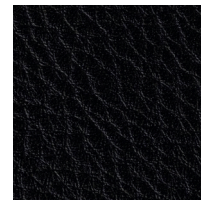
pisa
4/2298 B1



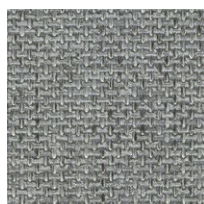
bari
4/2198 B1



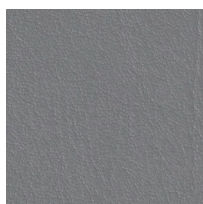
siena
2/6099 B1



monza
2/6199 B1



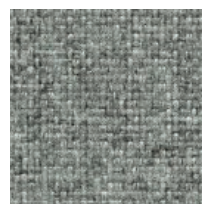
triest
4/2391 B1



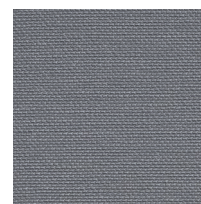
siena
2/6096 B1



bologna
2/0893 B1



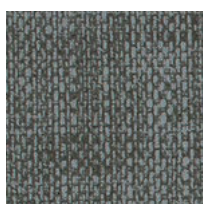
bari
4/2191 B1



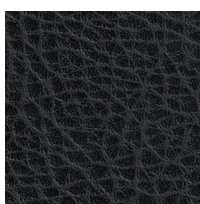
bologna
2/0891



bologna
2/0897 B1



genua
4/4493



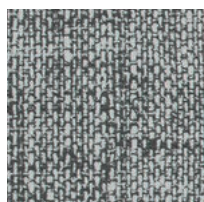
monza
2/6197 B1



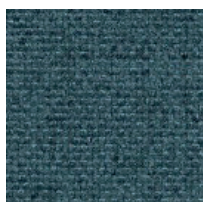
siena
2/6097 B1



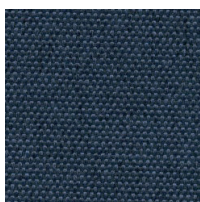
neapel
4/2097 B1



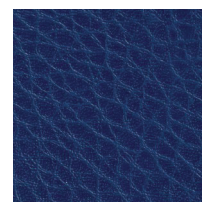
genua
4/4491



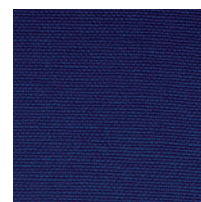
bari
4/2179 B1



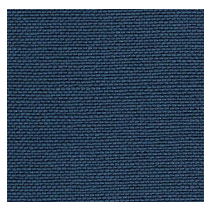
pisa
4/2278 B1



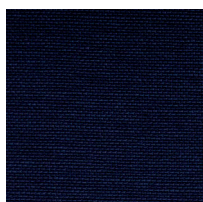
monza
2/6179 B1



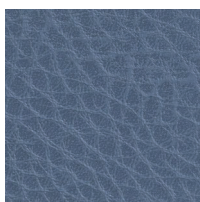
bologna
2/0875 B1



bologna
2/0879 B1



bologna
2/0876



monza
2/6174 B1



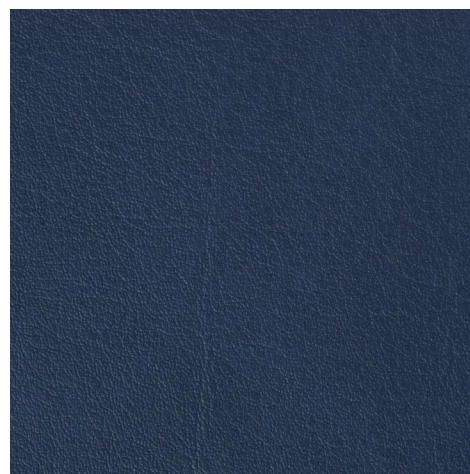
monza
2/6177 B1



siena
2/6076 B1



neapel
4/2078 B1



siena
2/6078 B1

Stoffgruppe . Tissu groupe . Fabric category

bari	4	genua	4	pisa	4
bologna	2	monza	2	siena	2
bologna B1	4	neapel	4	triest	4

B1 Flammenschutz . Classement au feu . Flammability
 DIN 4102-B1, NF M1