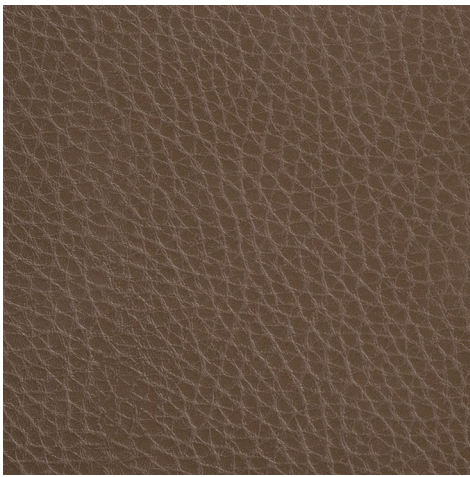
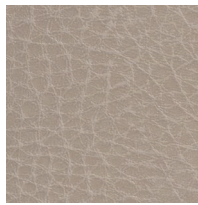


Die Farbwiedergabe ist nicht farbverbindlich.
Des nuances de teintes dues à l'impression papier sont possibles.
The colour reproduction may vary.



monza
2/6184 B1



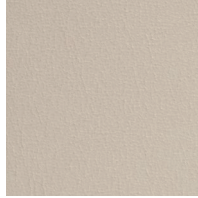
monza
2/6183 B1



bologna
2/0883



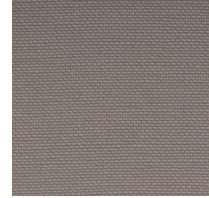
bari
4/2183 B1



siena
2/6082 B1



triest
4/2382 B1



bologna
2/0882 B1



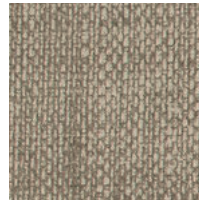
bologna
2/0885



pisa
4/2285 B1



bologna
2/0884 B1



genua
4/4481



neapel
4/2085 B1



genua
4/4487



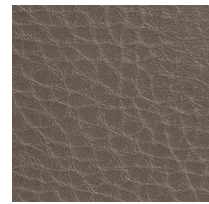
siena
2/6084 B1



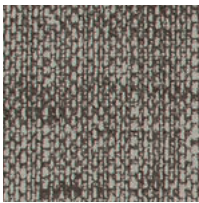
bari
4/2185 B1



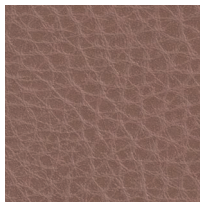
siena
2/6085 B1



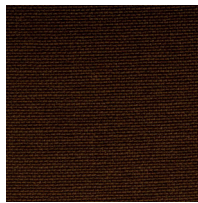
monza
2/6185 B1



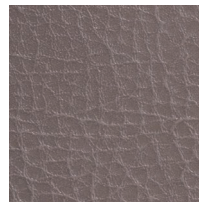
genua
4/4483



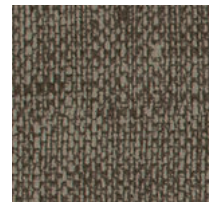
monza
2/6186 B1



bologna
2/0886



monza
2/6190 B1



genua
4/4485



monza
2/6187 B1



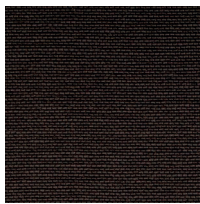
siena
2/6088 B1



monza
2/6188 B1



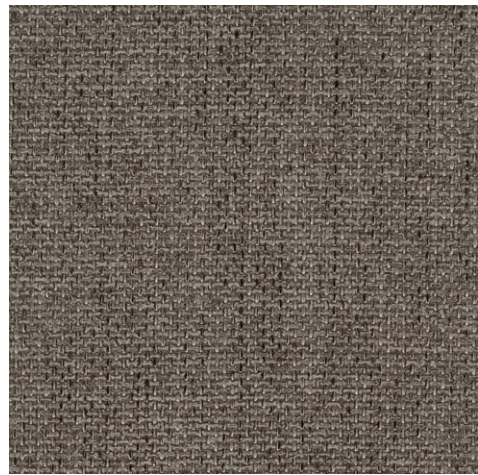
genua
4/4488



bologna
2/0887 B1



bologna
2/0888 B1



triest
4/2388 B1

Stoffgruppe . Tissu groupe . Fabric category

bari	4	genua	4	pisa	4
bologna	2	monza	2	siena	2
bologna B1	4	neapel	4	triest	4

B1 Flammenschutz . Classement au feu . Flammability
DIN 4102-B1, NF M1