

classic

boston Group 2

laser Group 2

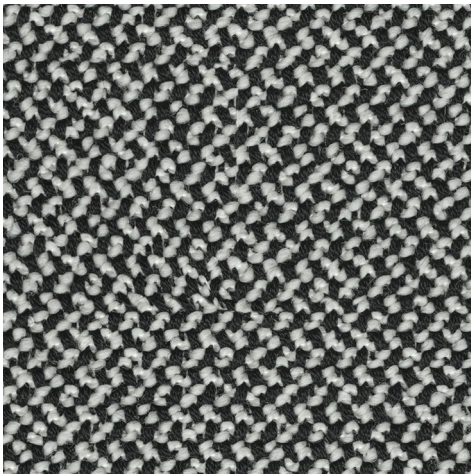
miami Group 6

palermo Group 2

rio Group 6

brunner ::

Die Farbwiedergabe ist nicht farbverbindlich.  
 Des nuances de teintes dues à l'impression papier sont possibles.  
 The colour reproduction may vary.



rio  
6/6798



rio  
6/6799



palermo  
2/1898



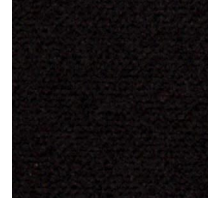
boston  
2/3099



laser  
2/6499



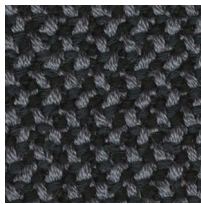
palermo  
2/1899



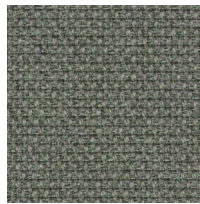
miami  
6/6699



miami  
6/6698



rio  
6/6797



boston  
2/3096



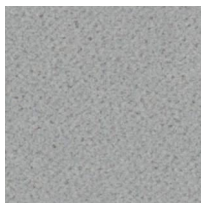
palermo  
2/1896



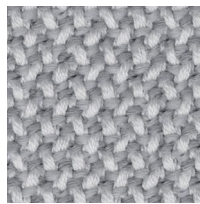
laser  
2/6498



laser  
2/6492



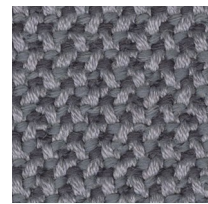
miami  
6/6692



rio  
6/6792



palermo  
2/1895



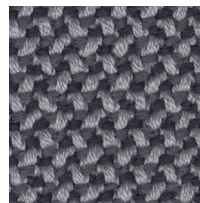
rio  
6/6794



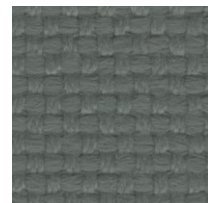
miami  
6/6688



miami  
6/6684



rio  
6/6795



laser  
2/6497



palermo  
2/1885



palermo  
2/1884



miami  
6/6687



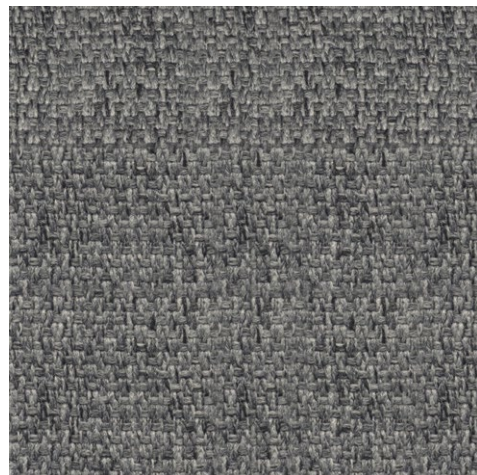
laser  
2/6481



rio  
6/6783



boston  
2/3083



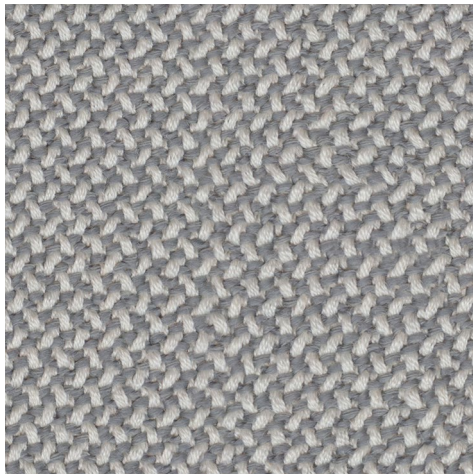
palermo  
2/1883

Stoffgruppe . Tissu groupe . Fabric category

<b>boston</b>	<b>2</b>	<b>miami</b>	<b>6</b>	<b>rio</b>	<b>6</b>
<b>laser</b>	<b>2</b>	<b>palermo</b>	<b>2</b>		



Die Farbwiedergabe ist nicht farbverbindlich.  
 Des nuances de teintes dues à l'impression papier sont possibles.  
 The colour reproduction may vary.



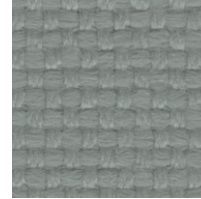
rio  
6/6793



laser  
2/6476



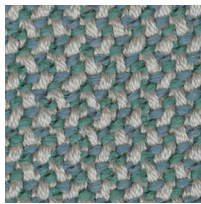
miami  
6/6676



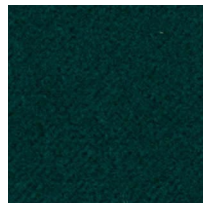
laser  
2/6494



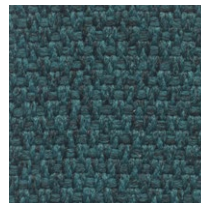
rio  
6/6791



rio  
6/6771



miami  
6/6671



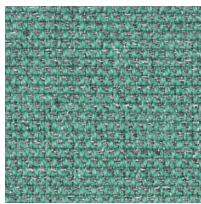
palermo  
2/1871



miami  
6/6672



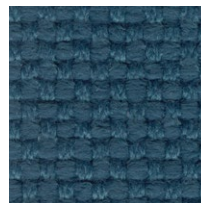
boston  
2/3078



boston  
2/3070



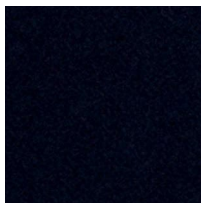
palermo  
2/1870



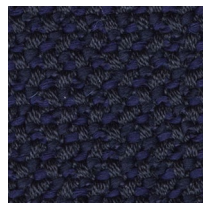
laser  
2/6478



palermo  
2/1878



miami  
6/6679



rio  
6/6779



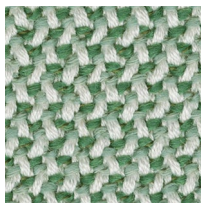
boston  
2/3079



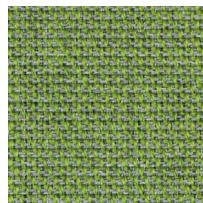
laser  
2/6479



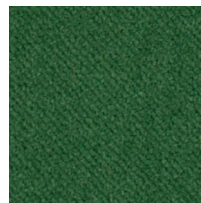
palermo  
2/1879



rio  
6/6762



boston  
2/3062



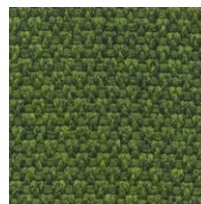
miami  
6/6662



laser  
2/6463



palermo  
2/1864



palermo  
2/1865



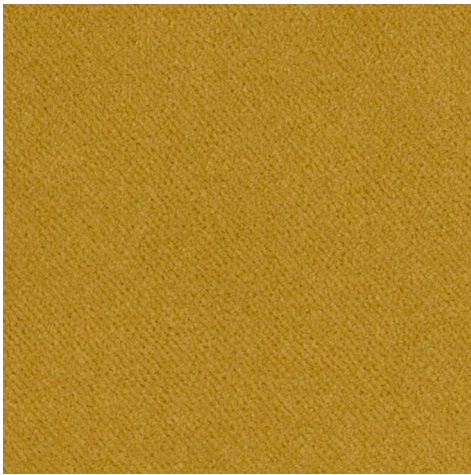
laser  
2/6462

Stoffgruppe . Tissu groupe . Fabric category

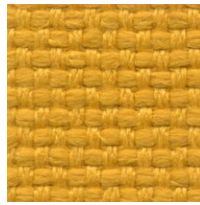
<b>boston</b>	<b>2</b>	<b>miami</b>	<b>6</b>	<b>rio</b>	<b>6</b>
<b>laser</b>	<b>2</b>	<b>palermo</b>	<b>2</b>		



Die Farbwiedergabe ist nicht farbverbindlich.  
 Des nuances de teintes dues à l'impression papier sont possibles.  
 The colour reproduction may vary.



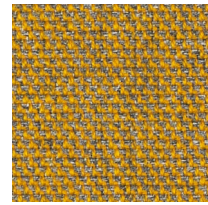
miami  
6/6602



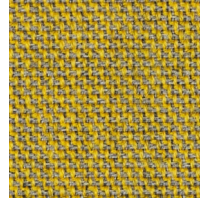
laser  
2/6403



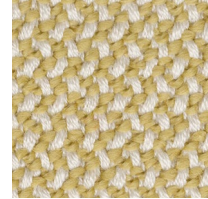
miami  
6/6603



boston  
2/3003



boston  
2/3002



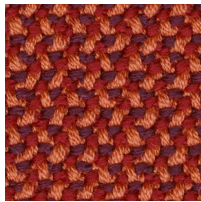
rio  
6/6702



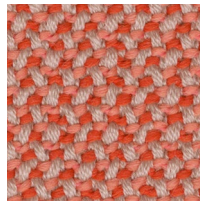
palermo  
2/1846



laser  
2/6446



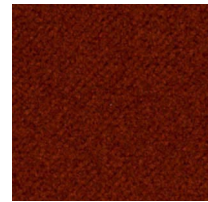
rio  
6/6748



rio  
6/6742



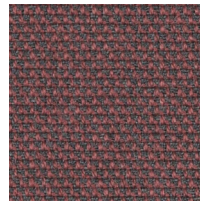
laser  
2/6442



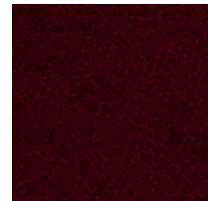
miami  
6/6648



laser  
2/6452



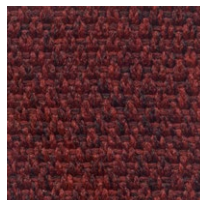
boston  
2/3046



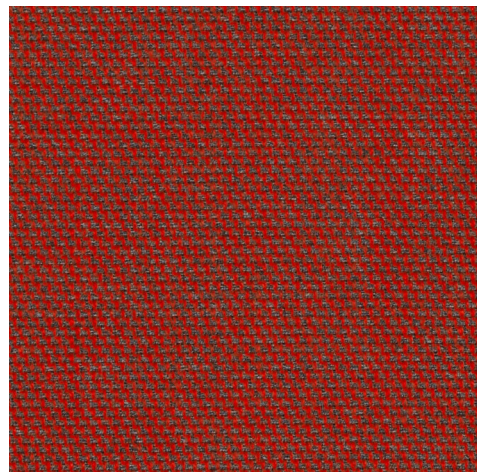
miami  
6/6649



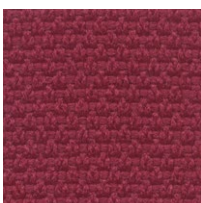
laser  
2/6449



palermo  
2/1849



boston  
2/3048



palermo  
2/1847



palermo  
2/1848



laser  
2/6448

Stoffgruppe . Tissu groupe . Fabric category

<b>boston</b>	<b>2</b>	<b>miami</b>	<b>6</b>	<b>rio</b>	<b>6</b>
<b>laser</b>	<b>2</b>	<b>palermo</b>	<b>2</b>		



## boston

### Stoffgruppe 2

Material: 48 % Wool, 41 % post-consumer rec PES, 9 % PA, 2 % PES  
Gewicht: ca. 370 g/lfm.  
Breite: ca. 140 cm  
Scheuerfestigkeit: 90.000 Touren  
ISO 12947-2  
Pilling: 4-5 ISO 12945-2  
Lichtechtheit: 5-7 ISO 105-B02  
Reibechtheit: 4/5 ISO 105x12 (wet/dry)  
Flammenschutz: BS EN 1021 1&2, BS 5852 Crib 5, CA TB 117-2013, Class Uno  
UNI 9175 Class 1 | EMME BS 476 Part 7 class1  
**Reinigung und Pflege:**



### Tissu groupe 2

Matière : 48 % laine, 41 % rec. post-consommation PES, 9 % PA, 2 % PES  
Poids : env. 370 g/ml.  
Largeur : env. 140 cm  
Résistance à l'abrasion : 90 000 tours  
ISO 12947-2  
Boulochage : 4-5 ISO 12945-2  
Résistance à la lumière : 5-7 ISO 105-B02  
Résistance au frottement : 4/5 ISO 105x12 (humide/sec)  
Inflammabilité : BS EN 1021 1&2, BS 5852 Crib 5, CA TB 117-2013, Classe Uno  
UNI 9175 Classe 1 | EMME BS 476 Part 7 class1  
**Nettoyage et entretien :**



### Fabric category 2

Material: 48 % wool, 41 % post-consumer rec. PES, 9 % PA, 2 % PES  
Weight: approx. 370 g/lm.  
Width: approx. 140 cm  
Abrasion resistance: 90,000 cycles  
ISO 12947-2  
Pilling: 4-5 ISO 12945-2  
Lightfastness: 5-7 ISO 105-B02  
Fastness to rubbing: 4/5 ISO 105x12 (wet/dry)  
Flammability: BS EN 1021 1&2, BS 5852 Crib 5, CA TB 117-2013, Class Uno,  
UNI 9175 Class 1 | EMME BS 476 Part 7 class1  
**Cleaning and care:**



## laser

### Stoffgruppe 2

100% Polyester **Trevira CS**  
Gewicht: 735 g/lfm. ± 5%  
Breite: 140 cm ± 2%  
Scheuerfestigkeit: 150.000 Touren ± 10% ISO 12947/2  
Pilling: 5 ISO 12945/2  
Lichtechtheit: ISO 105-B02 : 6  
Reibechtheit: ISO 105-X12 : 4/5  
Flammenschutz: UNI 9174 - 8456 Class C1, UNI 9175 Class 1 IM, DIN 4102 Class B1, NF 92501-7 Class M1, NF D 60013 Class AM18, EN 1021-1 & 2, BS Crib 5, BS 7176 Class Medium Hazard, EN 13773 Class 1, OENORM 3800-1 Class B1,Q1,TR1, California TB117, USA NFPA 701, USA NFPA 260, IMO Part 8 Upholstery  
**Reinigung und Pflege:**



### Tissu groupe 2

100% Polyester **Trevira CS**  
Poids : 735 g/ml. ± 5%  
Largeur : 140 cm ± 2%  
Résistance à l'abrasion : 150 000 Martindale ± 10% tours  
ISO 12947/2  
Boulochage : 5 ISO 12945-2  
Résistance à la lumière : niveau 6 (ISO 105-B02)  
Résistance au frottement : 4/5 ISO 105x12  
Classement au feu : UNI 9174 - 8456 Class C1, UNI 9175 Class 1 IM, DIN 4102 Class B1, NF 92501-7 Class M1, NF D 60013 Class AM18, EN 1021-1 & 2, BS Crib 5, BS 7176 Class Medium Hazard, EN 13773 Class 1, OENORM 3800-1 Class B1,Q1,TR1, California TB117, USA NFPA 701, USA NFPA 260, IMO Part 8 Upholstery  
**Nettoyage et entretien :**



### Fabric category 2

100% Polyester **Trevira CS**  
Weight: 735 g/lm. ± 5%  
Width: 140 cm ± 2%  
Abrasion resistance: 150,000 Martindale ± 10% cycles  
ISO 12947/2  
Pilling: 5 ISO 12945-2  
Lightfastness: level 6 (ISO 105-B02)  
Fastness to rubbing: 4/5 ISO 105x12  
Flammability: UNI 9174 - 8456 Class C1, UNI 9175 Class 1 IM, DIN 4102 Class B1, NF 92501-7 Class M1, NF D 60013 Class AM18, EN 1021-1 & 2, BS Crib 5, BS 7176 Class Medium Hazard, EN 13773 Class 1, OENORM 3800-1 Class B1,Q1,TR1, California TB117, USA NFPA 701, USA NFPA 260, IMO Part 8 Upholstery  
**Cleaning and care:**



### Generelle Reinigungshinweise für waschbare Stoffe:

Abnehmbare Bezüge können gewaschen werden. Bitte Pflegesymbole beachten. Weitere Hinweise finden Sie in unseren Reinigungs- und Pflegehinweisen unter [www.brunner-group.com](http://www.brunner-group.com)

### Instructions générales de nettoyage pour les tissus lavables :

Les housses amovibles peuvent être lavées. Veuillez noter les symboles d'entretien. Vous trouverez de plus amples indications dans nos instructions de nettoyage et d'entretien à l'adresse [www.brunner-group.com](http://www.brunner-group.com)

### General cleaning instructions for washable fabrics:

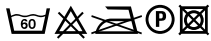
Removable covers can be washed. Please note the care symbols. For more information, see our cleaning and care instructions at [www.brunner-group.com](http://www.brunner-group.com)

## miami

### Stoffgruppe 6

Material: 100% **Trevira CS**  
 Gewicht: ca. 600g/lfm.  
 Breite: ca. 140 cm  
 Scheuerfestigkeit: 100.000 Touren  
 ISO 12947-2  
 Pilling: 5 ISO 12945-2  
 Lichtechtheit: 5–8 ISO 105-B02  
 Reibechtheit: 4/5 ISO 105x12 (wet/dry)  
 Flammschutz: BS EN 1021 1&2,  
 BS 5852 Crib 5, CA TB 117-2013,  
 Class Uno UNI 9175 Class 1 I EMME,  
 DIN 4102 - B1, NFP 92-503/504/505 M1,  
 AM 18 - NF D 60-013-(only for fabric),  
 CA TB 117-2013

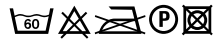
#### Reinigung und Pflege:



### Tissu groupe 6

Matière : 100 % **Trevira CS**  
 Poids : env. 600 g/ml.  
 Largeur : env. 140 cm  
 Résistance à l'abrasion : 100 000 tours  
 ISO 12947-2  
 Boulochage : 5 ISO 12945-2  
 Résistance à la lumière : 5–8 ISO 105-B02  
 Résistance au frottement : 4/5 ISO 105x12  
 (humide/sec)  
 Inflammabilité : BS EN 1021 1&2, BS 5852 Crib  
 5, CA TB 117-2013, Classe Uno UNI 9175 Classe  
 1 I EMME, DIN 4102 - B1, NFP 92-503/504/505  
 M1, AM 18 - NF D 60-013-(uniquement pour  
 le tissu), CA TB 117-2013

#### Nettoyage et entretien :



### Fabric category 6

Material: 100% **Trevira CS**  
 Weight: approx. 600 g/lm.  
 Width: approx. 140 cm  
 Abrasion resistance: 100,000 cycles  
 ISO 12947-2  
 Pilling: 5 ISO 12945-2  
 Lightfastness: 5–8 ISO 105-B02  
 Fastness to rubbing: 4/5 ISO 105x12 (wet/dry)  
 Flammability: BS EN 1021 1&2, BS 5852 Crib 5,  
 CA TB 117-2013, Class Uno UNI 9175 Class 1 I  
 EMME, DIN 4102 - B1, NFP 92-503/504/505 M1,  
 AM 18 - NF D 60-013-(only for fabric),  
 CA TB 117-2013

#### Cleaning and care:



## palermo

### Stoffgruppe 2

Material: 100 % Polyester **Trevira CS**  
 Gewicht: 480 g/lfm. ± 5%  
 Breite: 140 cm ± 2%  
 Scheuerfestigkeit: 100.000 Touren  
 ISO 12947/2  
 Pilling: 5 ISO 12945/2  
 Lichtechtheit: ISO 105-B02 : 6  
 Reibechtheit: ISO 105-X12 : 4/5  
 Leichte Farbunterschiede sind  
 zwischen zwei Partien als normal zu  
 betrachten.  
 Flammschutz: UNI 9174 - 8456 Class C1,  
 UNI 9175 Class 1 IM, DIN 4102 Class B1,  
 NF 92501-7 Class M1, NF D 60013 Class AM18,  
 EN 1021-1 & 2, BS Crib 5, BS 7176 Class  
 Medium Hazard, EN 13773 Class 1

#### Reinigung und Pflege:



### Tissu groupe 2

Matériau : 100 % Polyester **Trevira CS**  
 Poids : 480 g/ml. ± 5%  
 Largeur : 140 cm ± 2%  
 Résistance à l'abrasion :  
 ISO 12947/2 : 100 000 tours Martindale  
 Boulochage : 5 ISO 12945/2  
 Solidité à la lumière : ISO 105-B02 : 6  
 Résistance au frottement : ISO 105-X12 : 4/5  
 De légères nuances de teintes entre  
 2 échantillons sont considérées  
 comme normales.  
 Classement feu : UNI 9174 - 8456 Class C1,  
 UNI 9175 Class 1 IM, DIN 4102 Class B1,  
 NF 92501-7 Class M1, NF D 60013 Class AM18,  
 EN 1021-1 & 2, BS Crib 5, BS 7176 Class  
 Medium Hazard, EN 13773 Class 1

#### Nettoyage et entretien :



### Fabric category 2

Material: 100 % Polyester **Trevira CS**  
 Weight: 480 g/lm. ± 5%  
 Width: 140 cm ± 2%  
 Abrasion resistance: (Martindale)  
 ISO 12947/2: 100,000 cycles  
 Pilling: 5 ISO 12945/2  
 Light fastness: ISO 105-B02 : 6  
 Fastness to rubbing: ISO 105-X12 : 4/5  
 Slight colour differences between one  
 lot and another have to be considered  
 within commercial tolerance.  
 Flammability: UNI 9174 - 8456 Class C1,  
 UNI 9175 Class 1 IM, DIN 4102 Class B1,  
 NF 92501-7 Class M1, NF D 60013 Class AM18,  
 EN 1021-1 & 2, BS Crib 5, BS 7176 Class  
 Medium Hazard, EN 13773 Class 1

#### Cleaning and care:

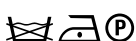


## rio

### Stoffgruppe 6

Material: 95% Wolle 5% PA  
 Gewicht: ca. 870 g/lfm.  
 Breite: ca. 140 cm  
 Scheuerfestigkeit: 100.000 Touren  
 ISO 12947-2  
 Pilling: ≥ 4–5 ISO 12945-2  
 Lichtechtheit: ≥ 5 ISO 105-B02 (Garnfärbung)  
**Reibechtheit**  
 Flammschutz: CAL TB 117 – 2013, DIN EN  
 1021-1/-2, BS 5852 Part 1: 1979, UNI 9175 1 IM,  
 ÖNORM B1/Q1, IMO 2014/90/EU

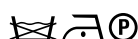
#### Reinigung und Pflege:



### Tissu groupe 6

Matière : 95 % laine vierge 5% PA  
 Poids : env. 870 g/ml.  
 Largeur : env. 140 cm  
 Résistance à l'abrasion : 100 000 tours  
 ISO 12947-2  
 Boulochage : ≥ 4–5 ISO 12945-2  
 Résistance à la lumière : ≥ 5 ISO 105-B02  
 (coloration fil)  
**Résistance au frottement**  
 Inflammabilité : CAL TB 117 – 2013, DIN EN  
 1021-1/-2, BS 5852 Partie 1 : 1979, UNI 9175 1  
 IM, ONORM B1/Q1, IMO 2014/90/EU

#### Nettoyage et entretien :



### Fabric category 6

Material: 95% WV 5% PA  
 Weight: approx. 870 g/lm.  
 Width: approx. 140 cm  
 Abrasion resistance: 100,000 cycles  
 ISO 12947-2  
 Pilling: ≥ 4–5 ISO 12945-2  
 Lightfastness: ≥ 5 ISO 105-B02 (yarn dyeing)  
**Fastness to rubbing**  
 Flammability: CAL TB 117 – 2013, DIN EN  
 1021-1/-2, BS 5852 Part 1: 1979, UNI 9175 1 IM,  
 ONORM B1/Q1, IMO 2014/90/EU

#### Cleaning and care:

