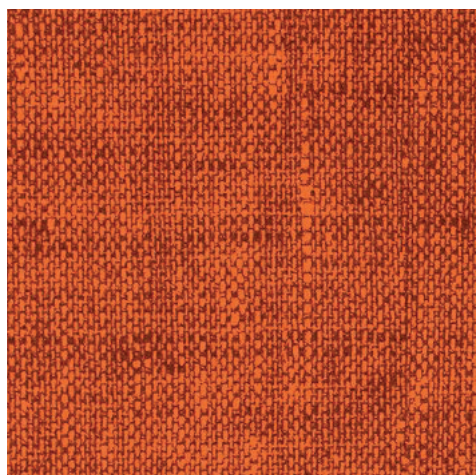


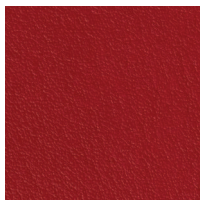
Die Farbwiedergabe ist nicht farbverbindlich.
Des nuances de teintes dues à l'impression papier sont possibles.
The colour reproduction may vary.



genua
4/4442



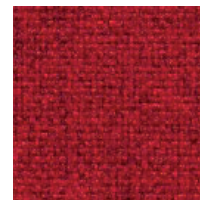
monza
2/6144 B1



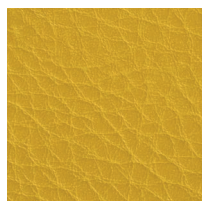
siena
2/6045 B1



monza
2/6145 B1



bari
4/2145 B1



monza
2/6103 B1



monza
2/6142 B1



bari
4/2142 B1



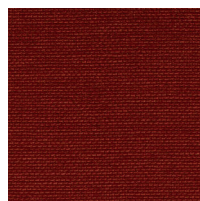
triest
4/2303 B1



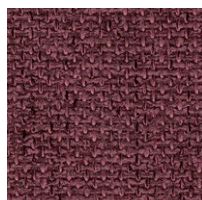
neapel
4/2003 B1



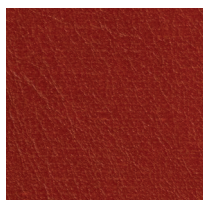
monza
2/6140 B1



bologna
2/0843



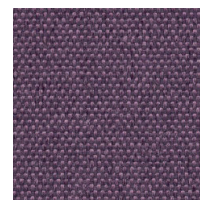
triest
4/2349 B1



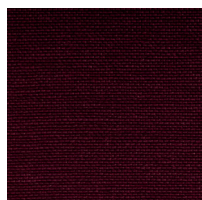
siena
2/6043 B1



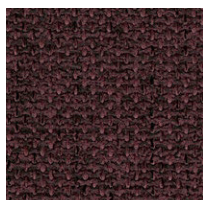
monza
2/6143 B1



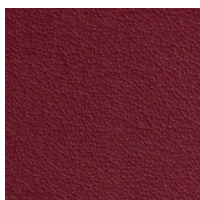
pisa
4/2257 B1



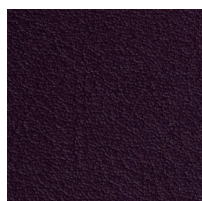
bologna
2/0849 B1



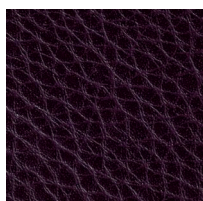
triest
4/2357 B1



siena
2/6049 B1



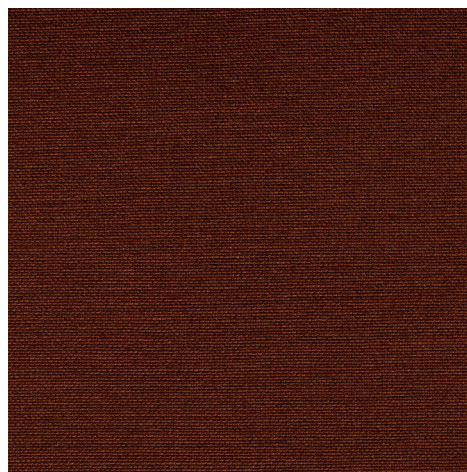
siena
2/6057 B1



monza
2/6157 B1



genua
4/4486



bologna
2/0842

Stoffgruppe . Tissu groupe . Fabric category

bari	4	genua	4	pisa	4
bologna	2	monza	2	siena	2
bologna B1	4	neapel	4	triest	4

B1 Flammenschutz . Classement au feu . Flammability
DIN 4102-B1, NF M1