

brunner ::

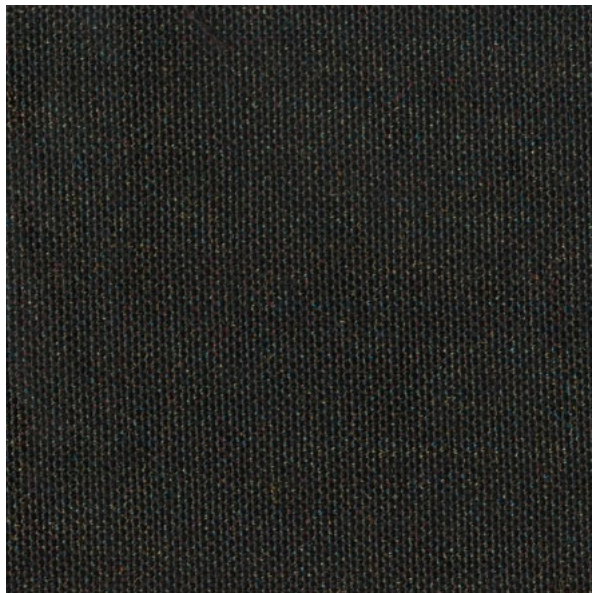
classic . bremen

Stoffgruppe 2 Tissu groupe 2 Fabric category 2

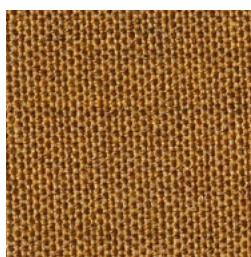
# bremen

---

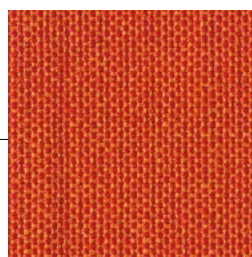
Stoffgruppe 2  
Tissu groupe 2  
Fabric category 2



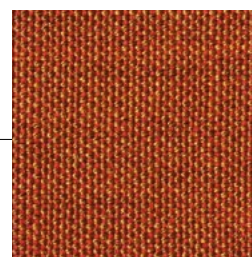
2/2499



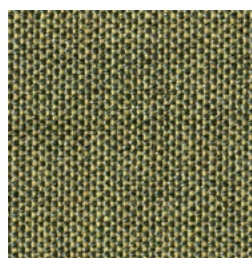
2/2404



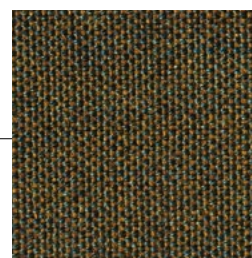
2/2442



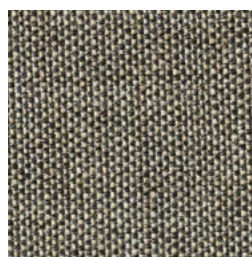
2/2443



2/2460



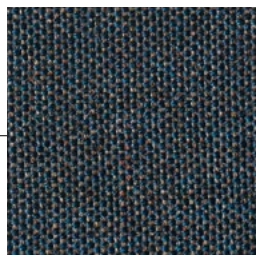
2/2469



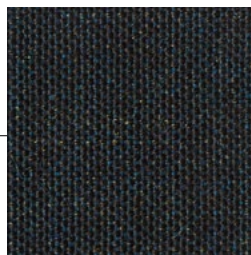
2/2484

---

Die Farbwiedergabe ist nicht farbverbindlich.  
La reproduction des couleurs n'est pas obligatoire.  
The colour reproduction may vary.



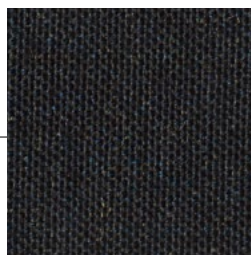
2/2476



2/2477



2/2497



2/2498



2/2499

## bremen

---

### Stoffgruppe 2

90% Schurwolle, Kammgarn  
10% Nylon  
Breite: ca. 138 cm  
Gewicht: ca. 415 g/lfm.  
Materialgefärbt. Farbunterschiede können vorkommen  
Scheuerfestigkeit: ca. 100.000  
Scheuerhübe Martindale Methode EN ISO 12947  
Lichtechtheit: (ISO) 5-7  
Pilling: (EN ISO) 3-4  
Reibechtheit (ISO) trocken 4-5, nass 4  
Flammschutz:  
EN 1021-1/2  
BS 5852, ignition source 2-3  
Önorm B1/Q1  
UNI 9175, 1IM  
Cal. Tech. Bull. 117, Sec. E  
IMO A.652(16)

### Tissu groupe 2

90% laine, fil d'étain  
10% nylon  
Largeur : 138 cm  
Poids : environ 415 g/ml  
Résistance à l'abrasion :  
100.000 Martindale EN ISO 12947  
Solidité à la lumière : (ISO) 5-7  
Résistance au frottement : (ISO) mouillé : 4-5 sec 4  
Boulochage (EN ISO) : 3-4  
Normes au feu :  
EN 1021-1/2  
BS 5852, ignition source 2-3  
Önorm B1/Q1  
UNI 9175, 1IM  
Cal. Tech. Bull. 117, Sec. E  
IMO A.652(16)

### Fabric category 2

90% new wool  
10% nylon  
Width : 138 cm  
Weight : App. 415 g/lin.m  
Abrasion : App. 100.000 rubs acc. to the Martindale method, EN ISO 12947  
Pilling : Note 3-4, EN ISO 12945  
Lightfastness : Note 5-7, ISO 105-B02  
Flameresistance :  
EN 1021-1/2  
BS 5852, ignition source 2-3  
Önorm B1/Q1  
UNI 9175, 1IM  
Cal. Tech. Bull. 117, Sec. E  
IMO A.652(16)