

# brunner ::

## Inspiration 3

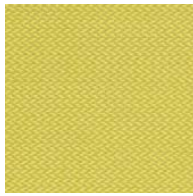
Revive 1+2 (100% recyceltes Polyester . 100% en polyester recyclé . 100% recycled polyester)

Stoffgruppe 2 Tissue groupe 2 Fabric category 2

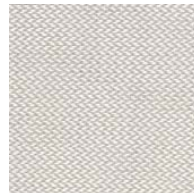
**kvadrat**



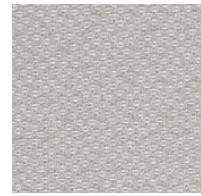
Revive 2  
423



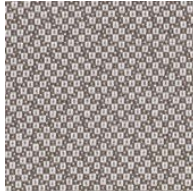
Revive 1  
424



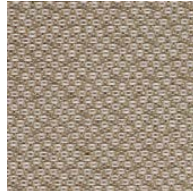
Revive 1  
224



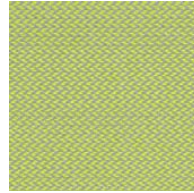
Revive 2  
133



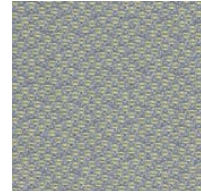
Revive 2  
323



Revive 2  
223



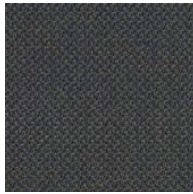
Revive 1  
914



Revive 2  
923



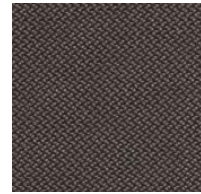
Revive 2  
973



Revive 1  
974



Revive 2  
933



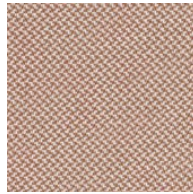
Revive 1  
274



Revive 1  
434



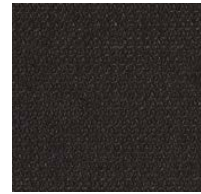
Revive 2  
433



Revive 1  
414



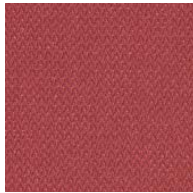
Revive 2  
383



Revive 1  
384



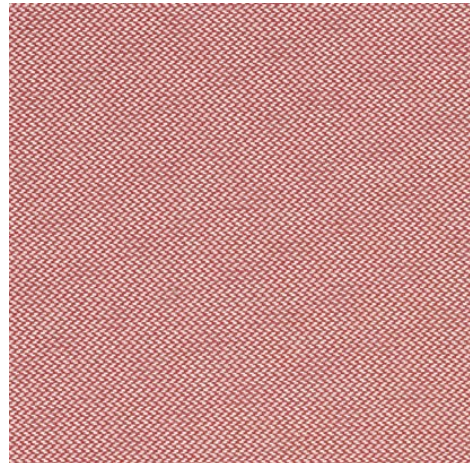
Revive 2  
633



Revive 1  
664



Revive 2  
663



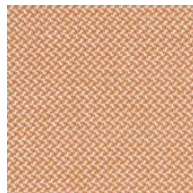
Revive 1  
524



Revive 1  
634



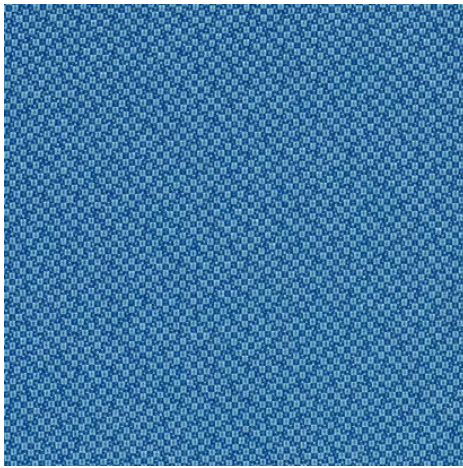
Revive 2  
523



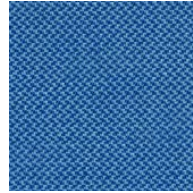
Revive 1  
534

Revive 1 Stoffgruppe 2 Tissu groupe 2 Fabric category 2  
Revive 2 Stoffgruppe 2 Tissu groupe 2 Fabric category 2

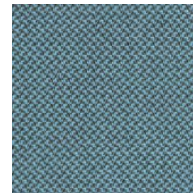
Auslaufkollektion: Revive 2 - Bei Bedarf bitte anfragen!  
Discontinued collection: Revive 2 - Please enquire if needed!  
Collection expirée : Revive 2 - En cas de besoin prière de nous consulter !



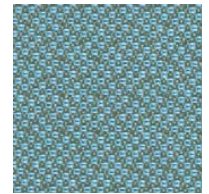
Revive 2  
753



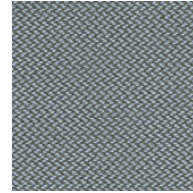
Revive 1  
754



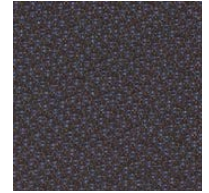
Revive 1  
834



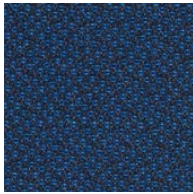
Revive 2  
833



Revive 1  
944



Revive 2  
373



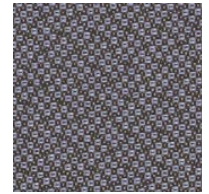
Revive 2  
773



Revive 1  
774



Revive 1  
284



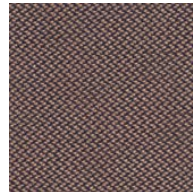
Revive 2  
173



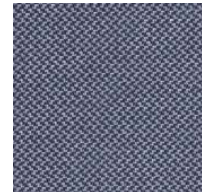
Revive 1  
184



Revive 2  
453



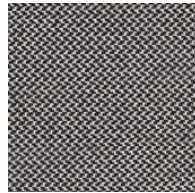
Revive 1  
454



Revive 1  
764



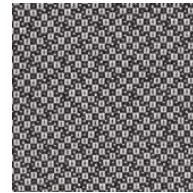
Revive 2  
183



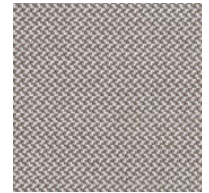
Revive 1  
164



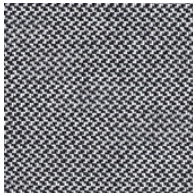
Revive 1  
194



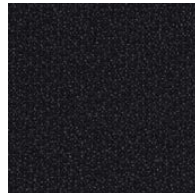
Revive 2  
163



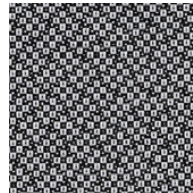
Revive 1  
324



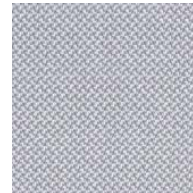
Revive 1  
154



Revive 2  
193



Revive 2  
153



Revive 1  
144

Revive 1 Stoffgruppe 2 Tissu groupe 2 Fabric category 2  
Revive 2 Stoffgruppe 2 Tissu groupe 2 Fabric category 2

Auslaufkollektion: Revive 2 - Bei Bedarf bitte anfragen!  
Discontinued collection: Revive 2 - Please enquire if needed!  
Collection expirée : Revive 2 - En cas de besoin prière de nous consulter !

## Revive 1 Designed by Georgina Wright



**Anwendungsbereich** Büros, Hotels, Objectbereich, privaten Wohnbereich, Hohe Strapazierfähigkeit

**Beschreibung** 100% recycled Polyester FR, Breite 140 cm, Gewicht ca. 430 g/lfd.m, Garngefärbt, Farbunterschiede können vorkommen

### Webkante ↔

**Testergebnisse** Scheuerfestigkeit: Ca. 60.000 Scheuerhübe gemäss der Martindale Methode EN ISO 12947. Lichtechtheit: (ISO) 5-7. Pilling: (EN ISO) 4-5. Reibechtheit: (ISO) Trockener 5, Nasser 4-5. Flammschutz: DIN 4102 B1. ÖNORM B1/Q1. EN 1021-1/2. Ignition source 0-1. UNI 9175 11M. US Cal. Bull. 117-2013. IMO A.652(16). (Kopie von Prüfungsbericht verfügbar)

**Pflege** Siehe ISO Pflegesymbole. Wascheinlauf ca. 1% bei 60°C

**Domaine d'utilisation** Tissu d'ameublement pour aménagement privé et public. Grande résistance.

**Description** 100% polyester FR recyclé. Largeur 140 cm. Poids env. 430 g/m lg. Teinture sur fil. Ecart des coloris possibles.

### Liseré de bordure ↔

**Tests** Résistance à l'abrasion: Env. 60.000 révolutions selon le procédé Martindale EN ISO 12947. Résistance à la lumière: (ISO) 5-7. Boulochage: (EN ISO) 4-5. Résistance au frottement: (ISO) sec 5, mouillé 4-5. Normes au feu: EN 1021-1/2. ignition source 0-1. DIN 4102 B1. ÖNORM B1/Q1. UNI 9175 11M. UNI 9177 Classe 1. US Cal. Bull. 117-2013. IMO A.652(16). (La copie du comptendu des tests est disponible sur demande).

**Entretien** Voir les symboles ISO. Rétrécissement: Env. 1% pour lavage à 60°C.

**Application** Offices, hotels, institutions, domestic use. Great durability.

**Description** 100% recycled polyester FR. Width 55 inches (140 cm). Weight app. 430 g/in.m. Yarn dyed. Colour differences may occur.

### Selvedge ↔

**Tests** Abrasion App. 60.000 rubs acc. to the Martindale method EN ISO 12947. Lightfastness: (ISO) 5-7. Pilling: (EN ISO) 4-5. Fastness to rubbing: (ISO) dry 5, wet 4-5. Flame resistance: EN 1021-1/2. ignition source 0-1. DIN 4102 B1. ÖNORM B1/Q1. UNI 9175 11M. US Cal. Bull. 117-2013. IMO A.652(16). (Copy of test report available).

**Care** Please see the ISO symbols. Shrinkage app. 1% when washed at 60°C

## Revive 2 Designed by Georgina Wright



**Anwendungsbereich** Büros, Hotels, Objectbereich, privaten Wohnbereich, Hohe Strapazierfähigkeit

**Beschreibung** 100% recycled Polyester FR, Breite 140 cm, Gewicht ca. 420 g/lfd.m, Garngefärbt, Farbunterschiede können vorkommen

### Webkante ↔

**Testergebnisse** Scheuerfestigkeit: Ca. 60.000 Scheuerhübe gemäss der Martindale Methode EN ISO 12947. Lichtechtheit: (ISO) 5-7. Pilling: (EN ISO) 4-5. Reibechtheit: (ISO) Trockener 5, Nasser 4-5. Flammschutz: DIN 4102 B1. ÖNORM B1/Q1. EN 1021-1/2. Ignition source 0-1. UNI 9175 11M. US Cal. Bull. 117-2013. IMO A.652(16). (Kopie von Prüfungsbericht verfügbar).

**Pflege** Siehe ISO Pflegesymbole. Wascheinlauf ca. 1% bei 60°C

**Domaine** Tissu d'ameublement pour aménagement privé et public. Grande résistance.

**Description** 100% polyester FR recyclé. Largeur 140 cm. Poids env. 420 g/m lg. Teinture sur fil. Ecart des coloris possibles

### Liseré de bordure ↔

**Tests** Résistance à l'abrasion: Env. 60.000 révolutions selon le procédé Martindale EN ISO 12947. Résistance à la lumière: (ISO) 5-7. Boulochage: (EN ISO) 4-5. Résistance au frottement: (ISO) sec 5, mouillé 4-5. Normes au feu: EN 1021-1/2. ignition source 0-1. DIN 4102 B1. ÖNORM B1/Q1. UNI 9175 11M. UNI 9177 Classe 1. US Cal. Bull. 117-2013. IMO A.652(16). (La copie du compte rendu des tests est disponible sur demande)

**Entretien** Voir les symboles ISO. Rétrécissement: Env. 1% pour lavage à 60°C.

**Application** Offices, hotels, institutions, domestic use. Great durability.

**Description** 100% recycled polyester FR. Width 55 inches (140 cm). Weight app. 420 g/in.m. Yarn dyed. Colour differences may occur.

### Selvedge ↔

**Tests** Abrasion App. 60.000 rubs acc. to the Martindale method EN ISO 12947. Lightfastness: (ISO) 5-7. Pilling: (EN ISO) 4-5. Fastness to rubbing: (ISO) dry 5, wet 4-5. Flame resistance: EN 1021-1/2. ignition source 0-1. DIN 4102 B1. ÖNORM B1/Q1. UNI 9175 11M. US Cal. Bull. 117-2013. IMO A.652(16). (Copy of test report available).

**Care** Please see the ISO symbols. Shrinkage app. 1% when washed at 60°C