

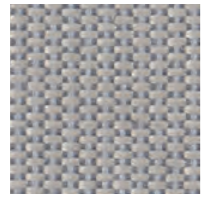
brunner ::

## Inspiration Outdoor

Patio

Stoffgruppe 6 Tissu groupe 6 Fabric category 6

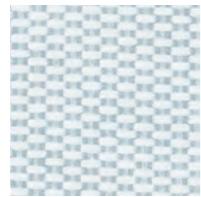
**kvadrat**



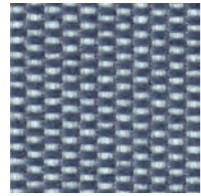
Patio  
150



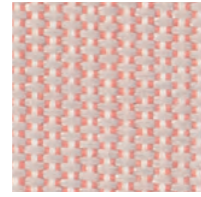
Patio  
210



Patio  
110



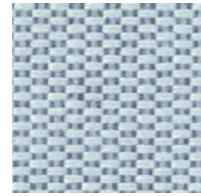
Patio  
170



Patio  
340



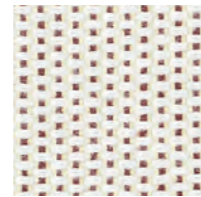
Patio  
230



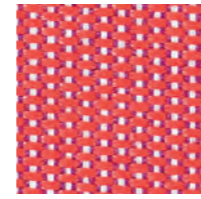
Patio  
140



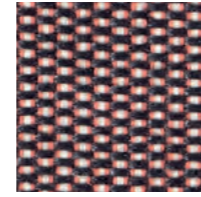
Patio  
100



Patio  
430



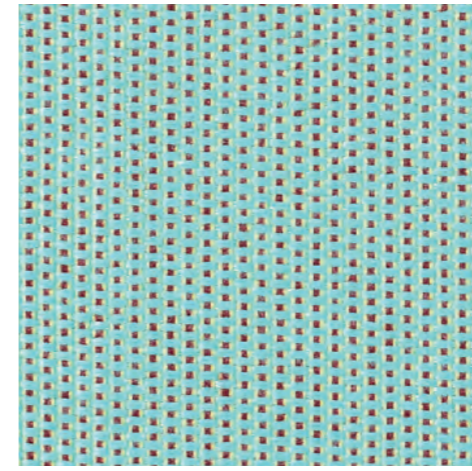
Patio  
550



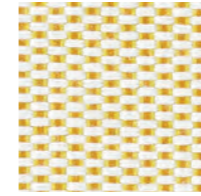
Patio  
370



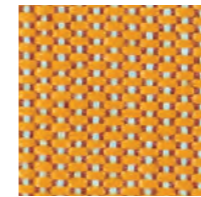
Patio  
200



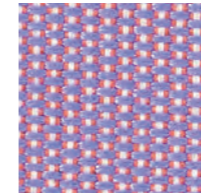
Patio  
840



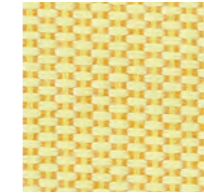
Patio  
410



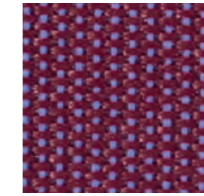
Patio  
450



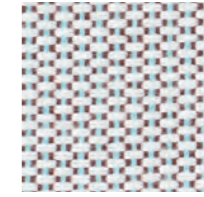
Patio  
650



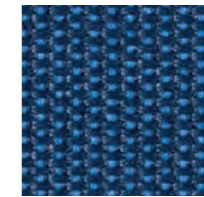
Patio  
440



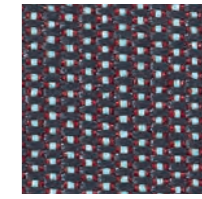
Patio  
570



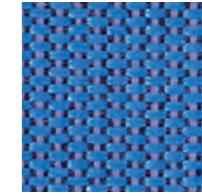
Patio  
220



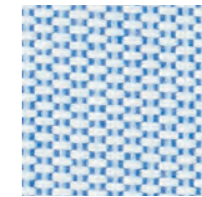
Patio  
780



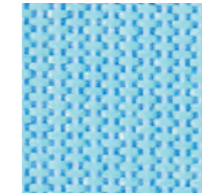
Patio  
970



Patio  
750



Patio  
730



Patio  
740

## Patio Designed by Karina Nielsen Rios



**Anwendungsbereich** Möbelstoff für öffentliche und private Bereiche. Resistent gegenüber Schimmel, Chlor-, Meerwasser und UV.

**Beschreibung** 100% Trevira CS. Fluorcarbon-frei wasserabweisend Ausrüstung. Breite ca. 140 cm. Gewicht ca. 560 g/lf.d.m. Garngefärbt. Farbunterschiede können vorkommen.

### Webkant ↔

**Testergebnisse** Scheuerfestigkeit: Ca. 50.000 Scheuerhübe gemäss der Martindale Methode EN ISO 12947. Lichtechtheit (ISO) 7. Wetterechtheit (ISO) 6-7. Pilling (EN ISO) 3-4. Reibechtheit (ISO) trocken 4-5, nass 4-5. Spraytest (EN) 3. Resistent gegenüber Verschmutzung (BS) min. 4. Flammschutz: BS 5852 ignition source 3. BS 5852 part 1 ignition source 0. DIN 4102 B1. EN 1021-1/2. IMO FTP Code 2010:Part 8. NF D 60 013. SN 198 898 5.2. UNI 9175 11M. US Cal. Bull. 117-2013. ÖNORM B1 / Q1. (Kopie von Prüfungsbericht verfügbar).

**Pflege** Sehen Sie bitte die ISO Pflegesymbole. Wascheinlauf ca. 1% bei 30°C.

**Domaine d'utilisation** Tissu d'ameublement pour aménagement privé et public. Résistant aux moisissures, au chlore, à l'eau de mer et UV.

**Description** 100% Trevira CS. Fini hydrofuge sans fluorocarbone. Largeur env. 140 cm. Poids env. 560 g/m lg. Teinture sur fil. Ecart de coloris possibles.

### Lisieré de bordure ↔

**Tests** Résistance à l'abrasion: Env. 50.000 révolutions selon le procédé Martindale EN ISO 12947. Résistance à la lumière (ISO) 7. Résistance aux intempéries (ISO) 6-7. Boulochage (EN ISO) 3-4. Résistance au frottement (ISO) sec 4-5, mouillé 4-5. Test de pulvérisation (EN) 3. Résistance à la salissure visible (BS) min. 4. Normes au feu: BS 5852 ignition source 3. BS 5852 part 1 ignition source 0. DIN 4102 B1. EN 1021-1/2. IMO FTP Code 2010:Part 8. NF D 60 013. SN 198 898 5.2. UNI 9175 11M. US Cal. Bull. 117-2013. ÖNORM B1 / Q1. (La copie du compte rendu des tests est disponible sur demande).

**Entretien** Voir les symboles ISO. Rétrécissement: Env. 1% pour lavage à 30°C.

**Application** Out- and indoor upholstery for both domestic and public decoration. Mildew, chlorine, seawater and UV resistant.

**Description** 100% Trevira CS. Fluorocarbon-free water repellent finish. Width app. 55 inches (140 cm). Weight app. 560 g/lin.m. Yarn dyed. Colour differences may occur.

### Selvedge ↔

**Tests** Abrasion: App. 50,000 rubs acc. to the Martindale method EN ISO 12947. Lightfastness (ISO) 7. Fastness to weathering (ISO) 6-7. Pilling (EN ISO) 3-4. Fastness to rubbing (ISO) dry 4-5, wet 4-5. Spray test (EN) 3. Resistant to visible soiling (BS) min. 4. Flame resistance: BS 5852 ignition source 3. BS 5852 part 1 ignition source 0. DIN 4102 B1. EN 1021-1/2. IMO FTP Code 2010:Part 8. NF D 60 013. SN 198 898 5.2. UNI 9175 11M. US Cal. Bull. 117-2013. ÖNORM B1 / Q1. (Copy of test report available).

**Care** Please see the ISO symbols. Shrinkage app. 1% when washed at 30°C.