

brunner ::

A modern interior space featuring the A-Bench furniture collection. The collection includes several modular sofas and armchairs upholstered in a vibrant green fabric. The pieces are supported by light-colored wooden legs. Small, dark, square side tables are placed between the seating areas. A black and white striped pillow is visible on one of the sofas. The background is a minimalist white space with a single pendant light hanging from the ceiling. A framed artwork is visible on the wall in the upper right corner.

# A-Bench

JEHS + LAUB

# CONTENTS

## Product idea 04

USPs

## In detail 06

Variants

## Impressions 09

Inspiration and detailed views

01

Product idea.

# Benchmark.

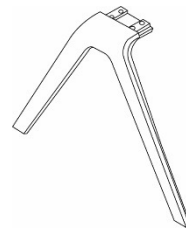
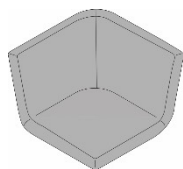
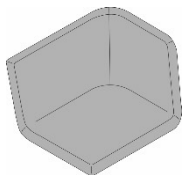
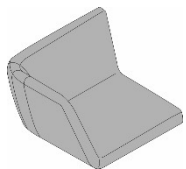
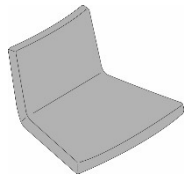
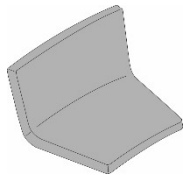
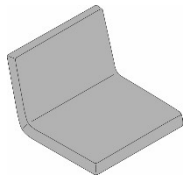
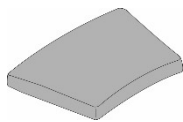
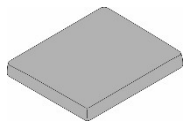
- Design language perfectly in tune with the lines of the range
- Modular system and thus suitable for a wide variety of uses, e.g. cafeteria, restaurant, co-working space and lounge
- High-quality moulded foam upholstery elements with pocket-sprung and cut foam inserts for outstanding seating comfort
- Choose from various linear linking mechanisms, either in rows or at 90° angles, or in a curve, also available with alternating seat direction
- Legs available in die-cast aluminium or optional solid oak wood
- Virtually invisible cross beams make the seat elements appear to float



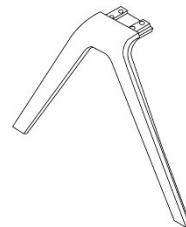
02

In detail.

# Variants.

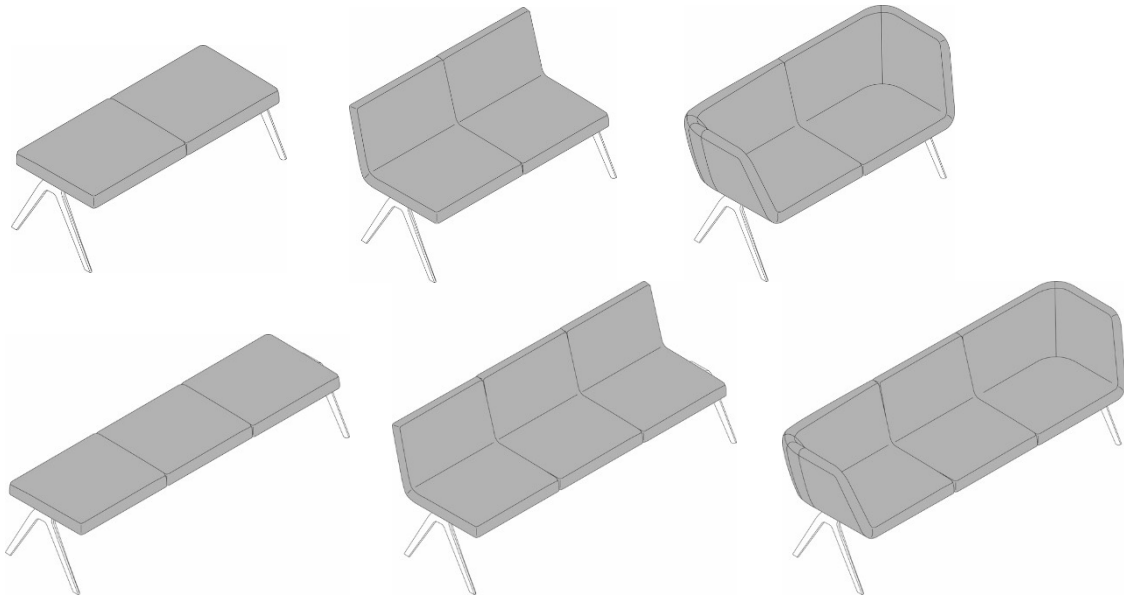


V-shaped foot stirrup in die-cast aluminium



V-shaped foot stirrup in solid oak wood, stained according to oak standard range, matt lacquered

# Variants.





03

# Impressions.

















BRUNNER | A-BENCH









Brunner lives for furniture  
that makes new things possible.

[brunner-group.com](http://brunner-group.com)