

brunner ::

# buena nova

ROLAND SCHMIDT, LSS DESIGNER



# CONTENTS

Product idea 04

USPs

In detail 08

Variants

Impressions 13

Inspiration and detailed views

01

# Product idea.

# Functional elegance.

- Stable solid beech wood frame with natural lacquer finish or stained
- Choice of version without armrests, with armrests, or with armrests with knobs
- Back rests in two heights, upon request upholstered or without upholstery
- Back connected by concealed screws, for more cosiness
- Handle bar for easier handling
- Seat surface without upholstery, with added seat liner or upholstered traverse under-frame
- Hygienic advantage: the optionally detachable seat liner is easy to clean
- Up to 5 chairs may be stacked on top of each other
- Matching tables, reclining chairs and easy chairs as complement



# Functional elegance. Solid wood furniture for the care sector.

A linear design, exceptional comfort and superior workmanship. Those were the principles guiding the development of buena nova.

The result is a range of solid wood furniture with clean lines that oozes elegance yet is suitable for everyday use. No fancy frills. Just ultimate comfort, flexibility and versatility.



# Suitable for a variety of possible uses.

buena nova fits right into all kinds of care settings, including residential rooms, lounges, communal areas and even cafeterias.

There are various frame, upholstery and armrest options to choose from and tables to match (buena nova/clear models). Not to mention the huge selection of fabrics and designs available. Thanks to this incredible freedom of design, the perfect cosy atmosphere can be created in every room.



02

In detail.



# Sleek and sophisticated seat design.

One signature feature of the buena nova range is its sturdy solid beech structure manufactured to a high standard. The built-in backrest bar makes it easier to move the chairs around without damaging the seat covers. Perfect for use in cafeterias.

The seat design is seriously sophisticated. There is a choice between a seat cushion and no upholstery. And the frame under the upholstery can be removed for an extra cosy look and feel.

**Schafft Platz:**  
bis zu 5 Stühle  
können gestapelt  
werden.



**Für zusätzlichen  
Sitzkomfort:**  
nach vorne leicht  
ansteigende  
Armlehnen.

# Functional details to make life easier.

Our extensive Brunner standard range is available for all upholstery options. So we are able to offer the right fabric, whatever the price point.

When hygiene matters most, the seat covers can be removed and washed. The zips arranged in a cross layout simplify and speed up that process.



**Many of our fabrics can  
be washed at up to 60°.**



**Removable seat cover:**  
With zips arranged in a cross layout  
to simplify and speed up removal.

## **Knob-arm-rests:**

Provide something to  
hold onto when standing  
up and sitting down.



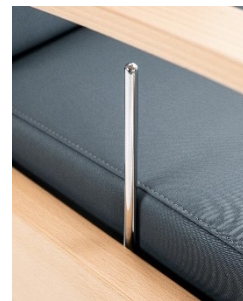
# Sit or lie back and relax.

The reclining chair is available with open or closed armrests. Made from solid wood, they have a wide surface and good grip to make standing up easier.

The easily accessible release handle can be used to flexibly adjust the seat and back separately to move from seated to reclined. Any position can be locked in place.



**Für zusätzlichen  
Komfort:**  
optionales  
Nackenkissen  
erhältlich.



# Solid wood tables to match.



**Table legs tapered on one side:** Highlighting the simple, subtle design.

Four-legged tables with a linear design are the perfect addition to the range. Choose between different profiles with straight and tapered table legs. The table top and legs are connected by means of recessed mounting plates or bevelled frames.

But the clever design is more than just a treat for the eyes. It also leaves room for a wheelchair under the table top. The beech veneer or HPL table surface is robust and easy to clean.

03

# Impressions.

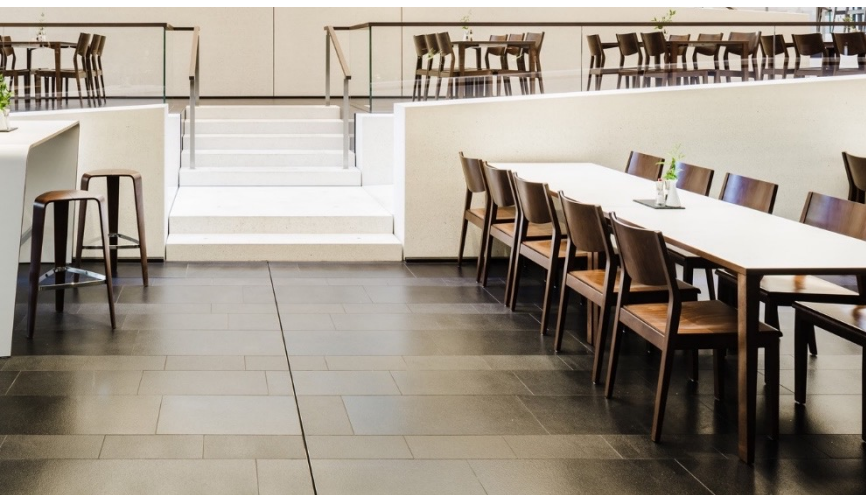


















Brunner lives for furniture  
that makes new things possible.

brunner ::