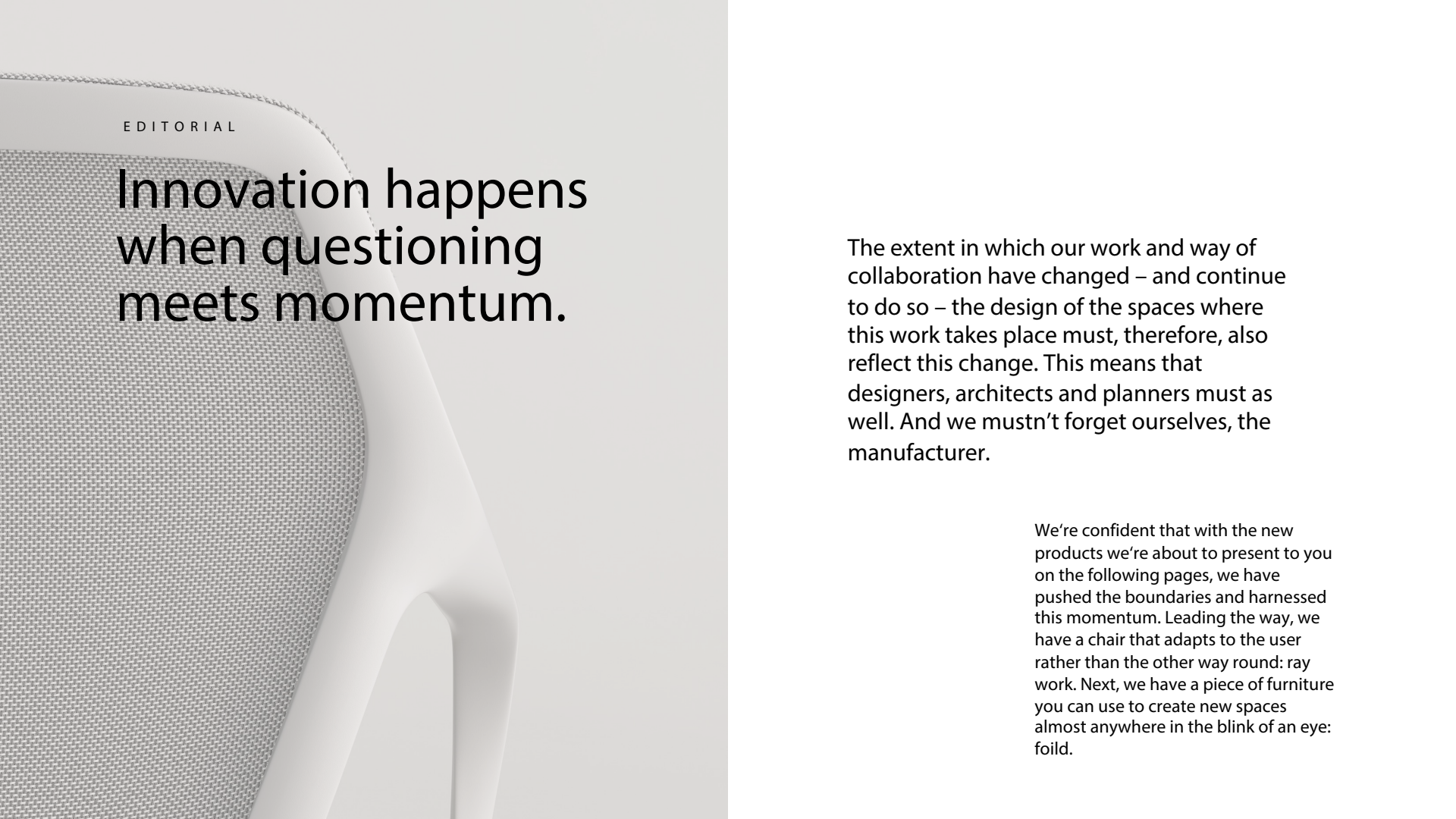




# design news

2024

brunner ::



EDITORIAL

# Innovation happens when questioning meets momentum.

The extent in which our work and way of collaboration have changed – and continue to do so – the design of the spaces where this work takes place must, therefore, also reflect this change. This means that designers, architects and planners must as well. And we mustn't forget ourselves, the manufacturer.

We're confident that with the new products we're about to present to you on the following pages, we have pushed the boundaries and harnessed this momentum. Leading the way, we have a chair that adapts to the user rather than the other way round: ray work. Next, we have a piece of furniture you can use to create new spaces almost anywhere in the blink of an eye: foild.

## CONTENTS

ray work	04
ray	12
foild	17
boards	23
basic row	27
pads	31
invite	37
crona steel	41
really	45

ray work

J E H S + L A U B

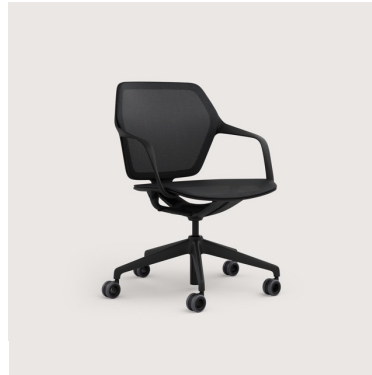




# Overview.

## USPs:

- Novel and exceptionally light office swivel chair in an elegant ergonomic design
- A dynamic seating experience thanks to a clever combination of materials and a synchronous mechanism with automatic weight adjustment
- Flexible plastic frame design that adapts to body movement
- Premium mesh back with a cosy feel: breathable and flexible while retaining its shape
- Wide range of colour and material combinations with mesh back as well as classic full upholstery



Seat and back with mesh covering



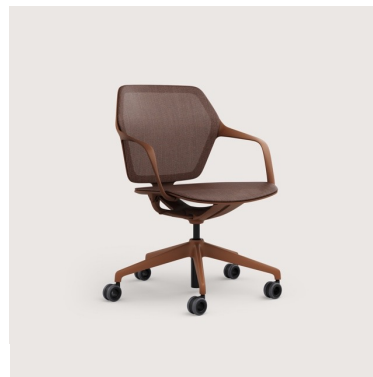
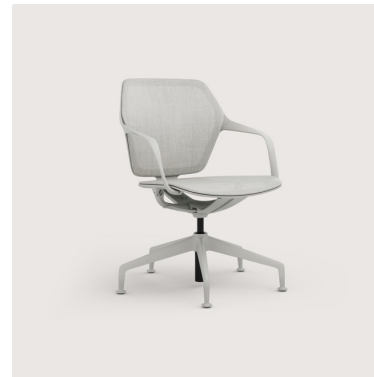
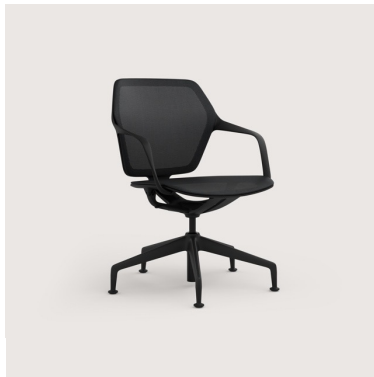
Back with mesh covering, fully upholstered seat



Fully upholstered seat and back

# Wide range of colours.

The frame is available in **six harmonious colours** to match the mesh covering – perfect for an elegant, monochrome look. Whether on gliders or casters.





ray work creates ideal working conditions: Thanks to its innovative synchronous mechanism, it moves you perfectly into position. The airy, light, transparent ray mesh covering provides flexible hold and support where it matters. The seat, or both the seat and back, can be upholstered fully for further comfort.



Flawless flexibility.







Combines  
ergonomics  
with elegance.





ray

J E H S + L A U B



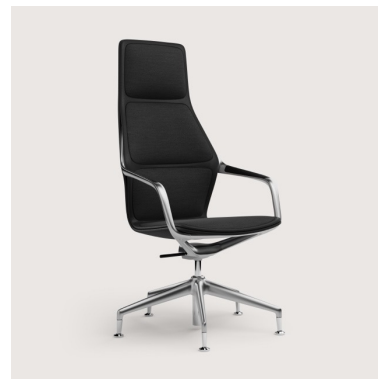
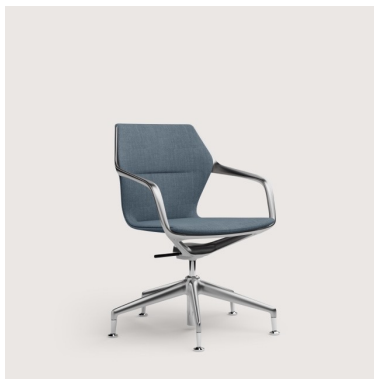
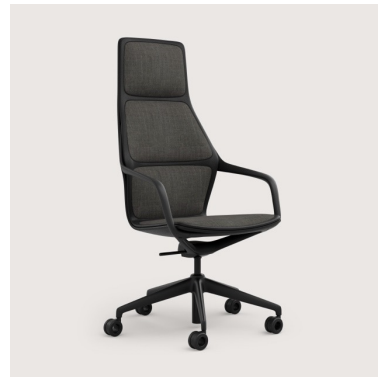
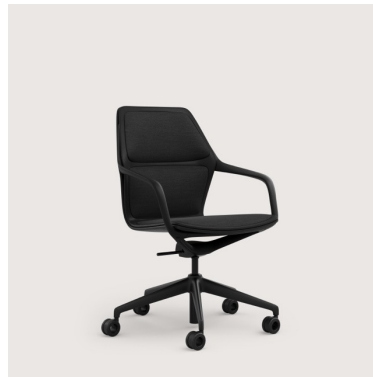
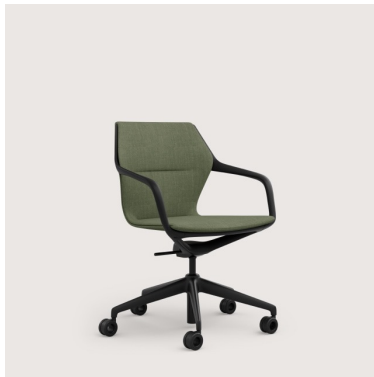
For meetings  
at eye level.



# Overview.

## USPs:

- Extension of the series with a height-adjustable version of the conference swivel chair
- top seating comfort thanks to ergonomic shape
- Low chair with flexible polygonal slats in the seat and back area for optimum adaptation to the body
- Medium- and high-back chair with integrated pads for special upholstered ergonomic zones
- Premium upholstery offers varied design options
- Continuously adjustable height, with tilting mechanism







Ergonomic adjustment to your body, an elegant appearance and a stimulating rocking mechanism: that is ray. For maximum comfort, the new version as a freely height-adjustable conference swivel chair brings everyone at the table into their personal comfort position: the ideal starting point for productive discussions at eye level.



The right  
setting is crucial.





foild

ATELIER OÏ



# Overview.

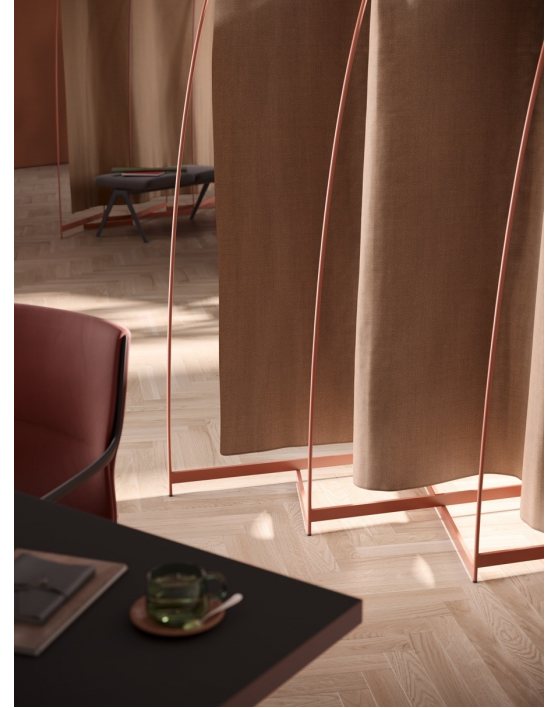
## USPs:

- Extendible room divider for flexible use of space
- Light and home-like look: high-quality textiles combined with slender aluminium bars
- Can be positioned free-standing in a room, in a straight or curved arrangement in two heights
- The scissor system allows flexible roll-out of the length and space-saving storage
- Streamlined design: plug connectors allow tool-free mounting and demounting
- All materials used can be sorted by component type and recycled





# Unfolding new possibilities.



foild is the epitome of flexible room design. The easy-to-position screens can be infinitely extended – in a straight line or gently curved. High-quality textiles with an opaque appearance enable private participation or a quiet space for concentration in the middle of the room at any time.





Need to screen off a seating and work area or keep the agile workshop out of sight? At 160 or 190 cm, foild is always the optimal height. Thanks to sophisticated plug connectors, the delicate, powder-coated aluminium frame can be assembled and disassembled without the need for any tools. The materials can be replaced, separated and sorted to ensure a sustainable service life.





Flexible  
room design.

# boards

OSKO+DEICHMANN



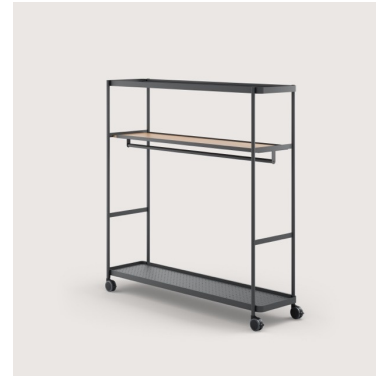
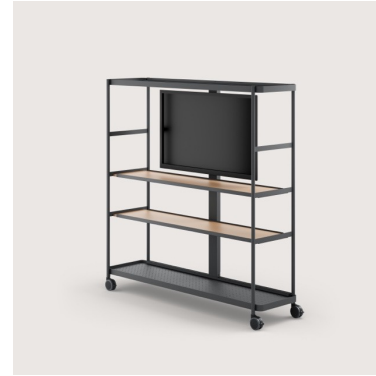




# Overview.

## USPs:

- Regular addition of new variations and functions to the range
- Whiteboard also available in a magnetic version
- Shelves can also be used as a wardrobe and media trolley
- Mobile and flexible: with casters, storage areas and optional integrated whiteboard for a wide range of applications
- Can also be used as a room divider
- For customising the design of adaptable workspaces and meeting rooms
- All materials used can be sorted by component type and recycled





Ideas with potential are the hallmark of improvements, which is precisely how the mobile boards shelf builds on the possibilities it opens up: It becomes a versatile media trolley with integrated storage space or creates a tidy wardrobe. The extremely lightweight whiteboards become even more attractive in a magnetic design. When correctly occupied, the new brakes are released, and the stools can move around freely. If the minimum weight is not met, they lock. The stool becomes a stable easel.

# basic row

ROLAND SCHMIDT DESIGN





# Overview.

## USPs:

- Flexible stacking table for quick room configuration in the event and seminar sector
- Timeless design with thin table top, extremely versatile
- Exceptionally practical, tool-free linking in a row
- Easy handling thanks to casters subtly integrated in the frame
- Space-saving storage and stackable design with matching transportation trolley
- Enables assembly and disassembly by a single person





basic row is always ready for use. The flexible table for settings that change as situations demand can be quickly lifted from a stack of ten or be tilted from the transportation trolley. A single person can position it as required on casters that are subtly integrated into the round-section steel tube frame. By simply pushing on and pulling apart, basic row links and detaches without the need for tools, thanks to intelligent stacking bumpers positioned beneath the elegantly thin table top. This saves valuable resources in the event and seminar sector.



pads

J E H S + L A U B



# Overview.

## USPs:

- Extension of the pads series with a small chair and a sofa
- Design flexibility thanks to the single-coloured or two-coloured upholstery
- Chair also available with casters, handle and writing tablet
- For maximum flexibility when working and communicating







pads is reclaiming the office: While the new sofa creates a convenient, comfortable meeting point for casual get-togethers, the mobile chair is quickly within reach – whether on glides or casters, with or without armrests, optional writing tablet and depending on the version with a handle in the back. Single-colored, two-tone, in a combination of fabric and leather, the cover options create visual variety in the workplace.




DOCK

WELCOME BACK  
IT'S GOOD TO SEE YOU

MAG 21





For the agile  
comfort zone  
in the office.



invite

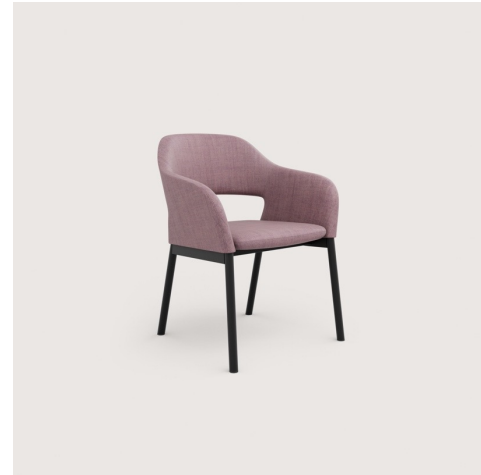
ARCHIRIVOLTO



# Overview.

## USPs:

- Cosy and timelessly elegant upholstered chair
- Inviting, comfortable shell with integrated armrests and open back that adapts optimally to the body
- Seat detachable without any tools allows a wide range of uses
- Option of solid wood or steel frame
- All materials used can be sorted by component type and recycled
- All-rounder for cafeterias, restaurants, waiting areas and the care sector





# Inviting appearance and feel.



The comfortable upholstery honours the promise made by the inviting shape: a cosy seating area where you can relax for a while – to enjoy, recover or spend time together. With its timeless elegance, tasteful upholstery options and the sturdy steel or solid wood four-legged frame, invite is suited for many different settings.

crona steel

ARCHIRIVOLTO







# Overview.

## USPs:

- Extension of the series with tables in a new design
- Perfectly coordinating with the lines of the seats
- Table top in an open strut design
- Elegant, geometric design combines an impression of lightness with high stability
- Additional standing table extends usage options
- With special outdoor coating available in the seven crona light colours



The new outdoor table makes a chic statement about its connection to the corona steel range. The distinctive table top design featuring flat steel struts and a scratch-resistant powder coating, blends in perfectly with the rest of the corona outdoor collection to create an elegant, uniform appearance.



# Kvadrat Really

KVADRAT





# Overview.

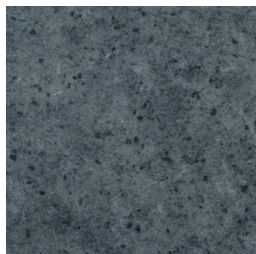
## USPs:

- Revolutionary table top made from textile waste
- A transparent melamin surface securing long-lasting durability
- Free from colourants, water or chemicals
- Impact-resistant ABS edge or BK round-edge (light oak, pure oak) on selected models
- Available for the following Brunner ranges: nate, nate s, boards, break

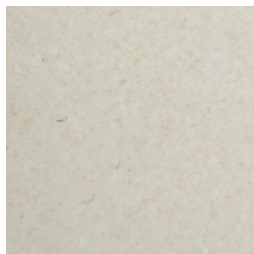


# Overview of variants.

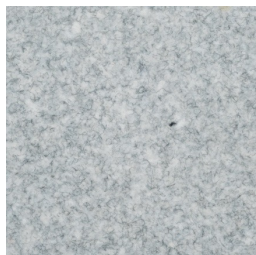
## Colours:



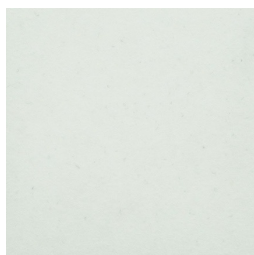
Cotton Blue



Cotton Cream



Cotton Grey



Cotton White

## Edges:



Impact-resistant ABS



BK round-edge\*

\*only for nate & nate s; light oak or pure oak





The Brunner nate, nate s and boards ranges plus bistro and standing tables from the break ranges are now even more sustainable thanks to the revolutionary Kvadrat Really table top from Danish textile manufacturer Kvadrat. For example, attractive table tops are made from textile waste and bio-based, recycled bonding agents. This saves CO2, conserves resources, protects the environment and is ultimately completely circular. Really.



Brunner lives for furniture  
that makes new things possible.

[brunner-group.com](http://brunner-group.com)