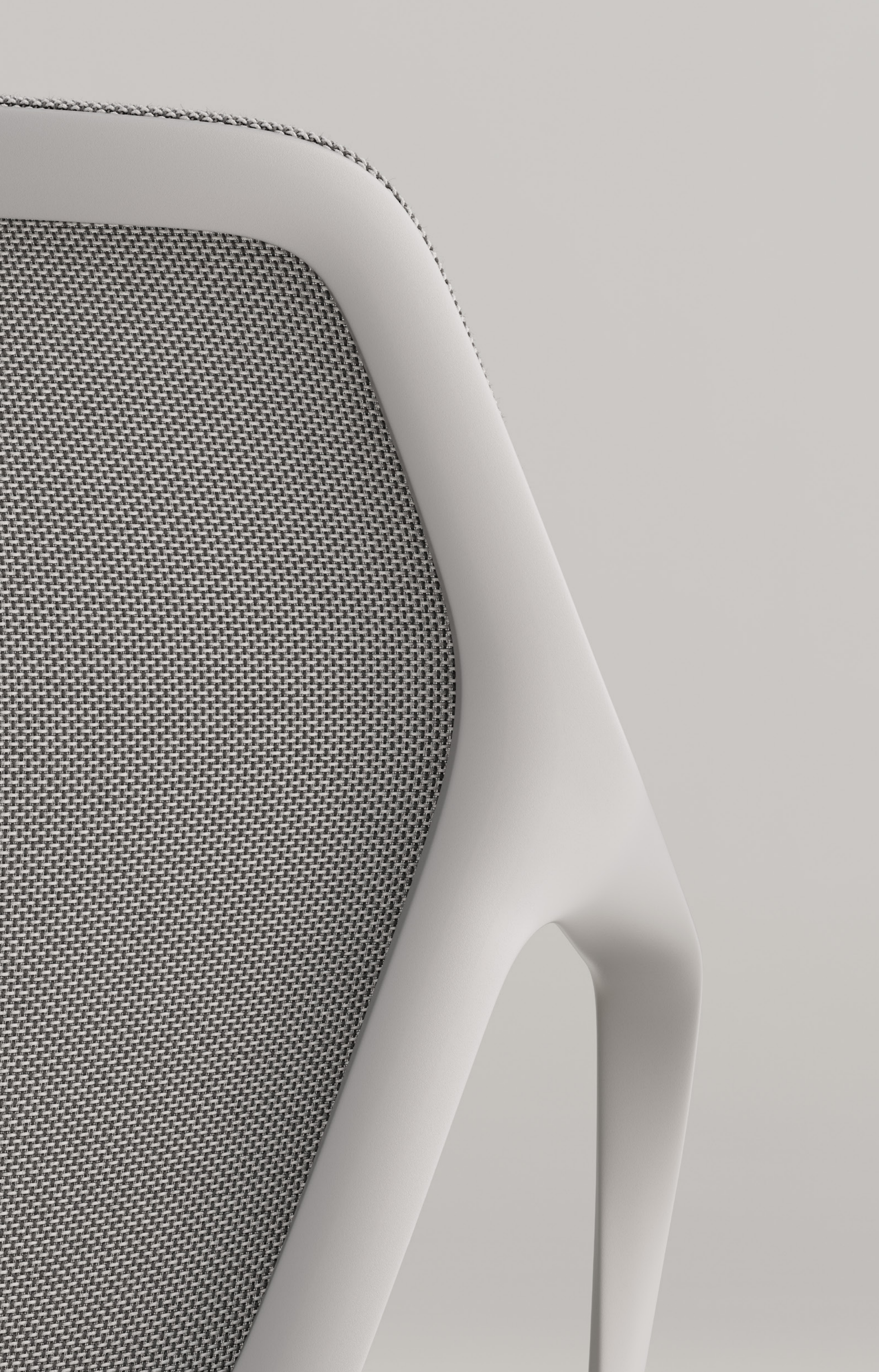




design news

2024

brunner ::



EDITORIAL

Innovation happens when questioning meets momentum.

The extent in which our work and way of collaboration have changed – and continue to do so – the design of the spaces where this work takes place must, therefore, also reflect this change. This means that designers, architects and planners must as well. And we mustn't forget ourselves, the manufacturer.

After all, new times require new answers. The most sustainable are found by asking new questions. Since the natural enemies of innovation are, in our opinion, not thinking outside the box and only within rigid categories.

We're confident that with the new products we're about to present to you on the following pages, we have pushed the boundaries and harnessed this momentum. Leading the way, we have a chair that adapts to the user rather than the other way round: ray work. Next, we have a piece of furniture you can use to create new spaces almost anywhere in the blink of an eye: foild.

Both of these – and all the other new products featured here in the Design News – follow the same principles of unique design and smart technical solutions while being simple and intuitive to use.

Perhaps it's in the Brunner family's DNA that what we love most is to develop products that don't already exist – and that wouldn't exist without us.

We embrace the change.

Rolf Brunner

Helena Brunner

Dr. Marc Brunner

Philip Brunner

ray work
ray
foild
boards
basic row
pads
invite
crona steel
really

06
14
18
24
26
28
32
36
38



ray work

JEHS+LAUB

Flawless
flexibility





ray work creates ideal working conditions: Thanks to its innovative synchronous mechanism, it moves you perfectly into position. The airy, light, transparent ray mesh covering provides flexible hold and support where it matters. The seat, or both the seat and back, can be upholstered fully for further comfort.



ray
JEHS+LAUB



The right
setting is crucial.



Ergonomic adjustment to your body, an elegant appearance and a stimulating rocking mechanism: that is ray. For maximum comfort, the new version as a freely height-adjustable conference swivel chair brings everyone at the table into their personal comfort position: the ideal starting point for productive discussions at eye level.

For meetings
at eye level.



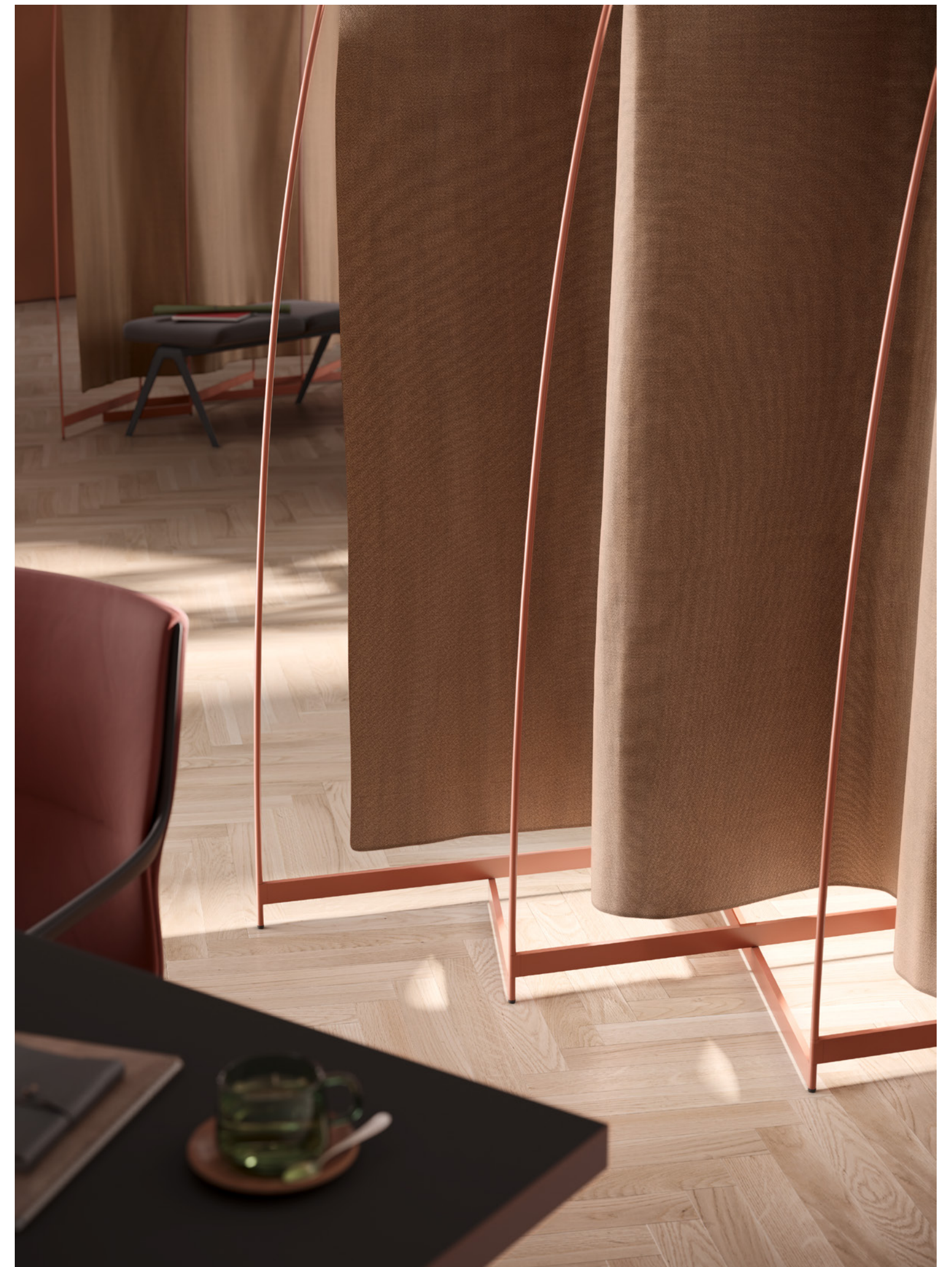
foild

ATELIER OÏ

Studiare a Milano

Milano è arte, moda, design,
che si studia e si vive.
Vivi al massimo la città.

Unfolding new possibilities.



foild is the epitome of flexible room design. The easy-to-position screens can be infinitely extended – in a straight line or gently curved. High-quality textiles with an opaque appearance enable private participation or a quiet space for concentration in the middle of the room at any time.



Need to screen off a seating and work area or keep the agile workshop out of sight? At 160 or 190 cm, foild is always the optimal height. Thanks to sophisticated plug connectors, the delicate, powder-coated aluminium frame can be assembled and disassembled without the need for any tools. The materials can be replaced, separated and sorted to ensure a sustainable service life.

boards

OSKO+DEICHMANN



Ideas with potential are the hallmark of improvements, which is precisely how the mobile boards shelf builds on the possibilities it opens up: It becomes a versatile media trolley with integrated storage space or creates a tidy wardrobe. The extremely lightweight whiteboards become even more attractive in a magnetic design. When correctly occupied, the new brakes are released, and the stools can move around freely. If the minimum weight is not met, they lock. The stool becomes a stable easel.



basic row

ROLAND SCHMIDT DESIGN

BASIC ROW

basic row is always ready for use. The flexible table for settings that change as situations demand can be quickly lifted from a stack of ten or be tilted from the transportation trolley. A single person can position it as required on casters that are subtly integrated into the round-section steel tube frame. By simply pushing on and pulling apart, basic row links and detaches without the need for tools, thanks to intelligent stacking bumpers positioned beneath the elegantly thin table top. This saves valuable resources in the event and seminar sector.





pads

JEHS+LAUB



pads is reclaiming the office: While the new sofa creates a convenient, comfortable meeting point for casual get-togethers, the mobile chair is quickly within reach – whether on glides or casters, with or without armrests, optional writing tablet and depending on the version with a handle in the back. Single-colored, two-tone, in a combination of fabric and leather, the cover options create visual variety in the workplace.



PADS

For the agile
comfort zone
in the office.



invite

ARCHIRIVOLTO



Inviting appearance and feel.



The comfortable upholstery honours the promise made by the inviting shape: a cosy seating area where you can relax for a while – to enjoy, recover or spend time together. With its timeless elegance, tasteful upholstery options and the sturdy steel or solid wood four-legged frame, invite is suited for many different settings.

crona steel

ARCHIRIVOLTO

DESIGN NEWS



The new outdoor table makes a chic statement about its connection to the crona steel range. The distinctive table top design featuring flat steel struts and a scratch-resistant powder coating, blends in perfectly with the rest of the crona outdoor collection to create an elegant, uniform appearance.

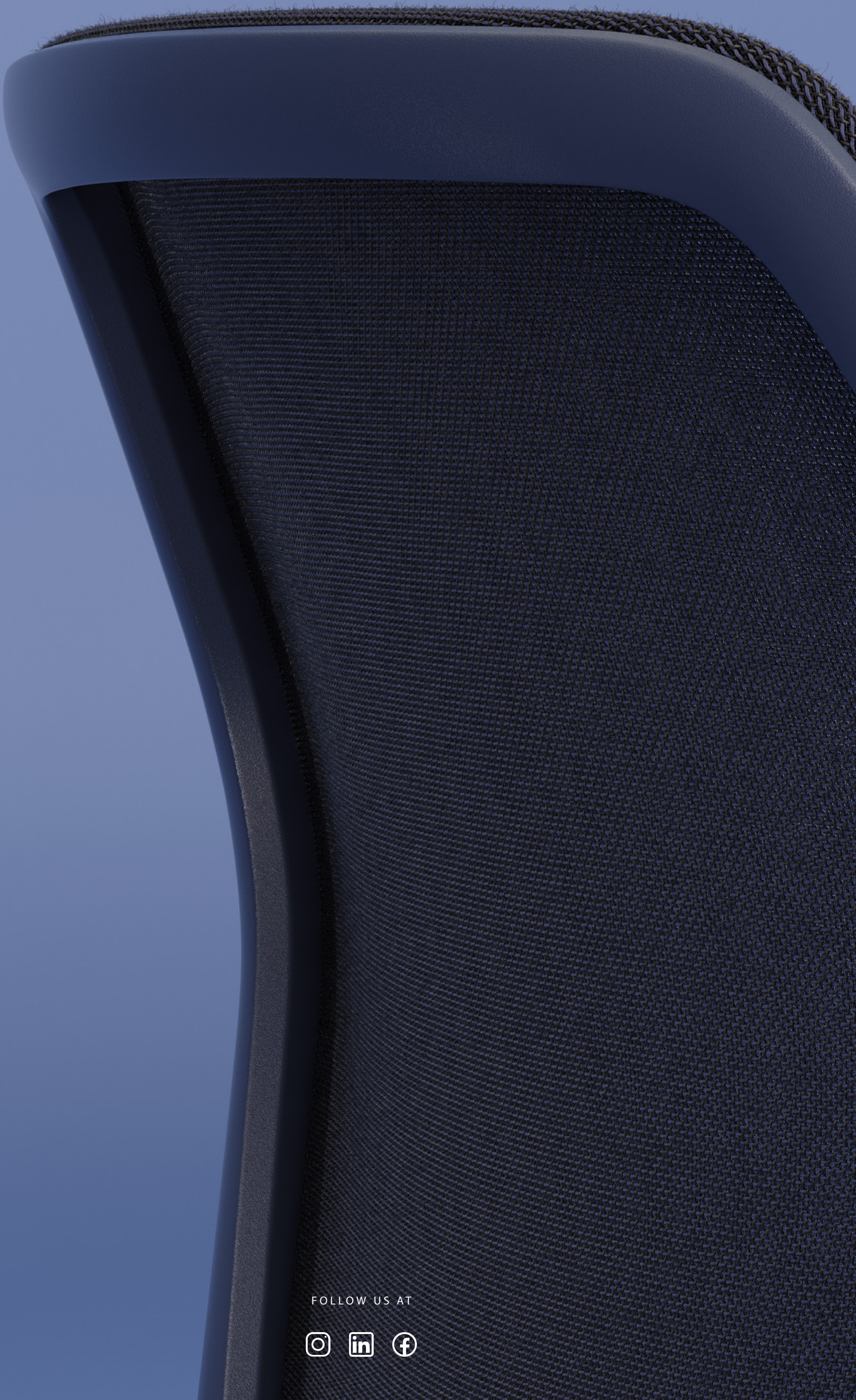


really

KVADRAT

Brunner nate, nate s and boards plus bistro and standing tables from the break ranges are now even more sustainable thanks to the revolutionary Kvadrat Really tabletop surface from Danish textile manufacturer Kvadrat. The attractive tabletops are made from textile waste and bio-based, recycled bonding agents, which saves CO2, conserves resources, protects the environment and is ultimately completely circular. Really.





FOLLOW US AT

